

# AdminStudio 2021 Release Notes

April 2021

<b>Introduction .....</b>	<b>2</b>
<b>New Features in AdminStudio 2021.....</b>	<b>2</b>
Package Feed Module - Customization Wizards .....	2
Package Backlog Management .....	3
Documented REST APIs .....	3
MSIX App Attach .....	3
MSIX Editor Enhancements .....	3
Importing of Registry Files .....	4
The Ability to Add a File or Folder in the Destination Details View .....	4
Support for the Use of Certificate Store to Digital Signing MSIX Package.....	5
Display of the Path and File Name in the Windows Title bar .....	5
Providing of Log File Details in the Output Window .....	5
Support for ConfigMgr 2010 .....	6
Support for Windows Server 2019 .....	6
InstallShield 2020 R3 .....	12
<b>Editions.....</b>	<b>13</b>
<b>System Requirements .....</b>	<b>20</b>
Compatibility Summary.....	20
AdminStudio Machine .....	26
Distribution Systems .....	27
Application Catalog Database Server .....	28
AdminStudio Enterprise Server / Workflow Manager Server .....	29
Automated Application Converter .....	30
Virtual Machine Requirements .....	30
Supported Virtual Machine Platforms .....	31
VMware Requirements.....	31
Microsoft Hyper-V Server Requirements .....	33
Virtual Machine Image Requirements.....	33
Virtual Technology Requirements.....	34
<b>Downloading AdminStudio Installers .....</b>	<b>34</b>
<b>AdminStudio 2021 Evaluation Restrictions .....</b>	<b>35</b>
<b>Known Issues.....</b>	<b>35</b>
<b>Resolved Issues.....</b>	<b>35</b>
<b>Legal Information .....</b>	<b>35</b>

# Introduction

AdminStudio is the starting point for any software's Operating System Compatibility Assessment, Risk Assessment, Deployments, Updates, New Releases, New Applications, and Windows 10 migrations. More than a packaging tool, AdminStudio arms your IT team with a complete application readiness solution, enabling you to identify and mitigate issues before pulling the deployment trigger. No more surprises.

With AdminStudio, you can:

- Improve service quality and streamline service delivery
- Decrease risk and embrace new technologies faster
- Eliminate mobile application security and compatibility concerns
- Reliably prepare and deploy application virtualization formats
- Integrate seamlessly with leading software deployment systems
- Simplify and unify application management with standardized processes
- Boost efficiency with a central application repository
- Identify application packaging issues in minutes instead of days

## New Features in AdminStudio 2021

This section lists the new features that are included in AdminStudio 2021:

- [Package Feed Module - Customization Wizards](#)
- [Package Backlog Management](#)
- [Documented REST APIs](#)
- [MSIX App Attach](#)
- [MSIX Editor Enhancements](#)
- [Support for ConfigMgr 2010](#)
- [Support for Windows Server 2019](#)
- [InstallShield 2020 R3](#)

## Package Feed Module - Customization Wizards

In AdminStudio 2021, the Package Feed Module introduces a new custom installation capability which provides application specific options for customizing installation options which provides a Windows Installer Transform (MST) file.

For more information, see [Importing an Application Using the Package Feed Module](#).

# Package Backlog Management

In AdminStudio 2021, you can now manage a simple backlog of packaging requests directly within AdminStudio. Set priorities, sort and filter. The list may be populated by importing a CSV file, via a new PowerShell Cmdlet and even by a newly documented API to facilitate integration with any existing process of workflows.

Product Name	Vendor	Version	Priority	Version In Catalog	Latest Version	Status	Subscribe	Source
Chrome	Google	50.0.5	1	No Match	No Match Chrome for Business 32-bit 89.0.4389.72_MSI* Chrome for Business 64-bit 89.0.4389.72_MSI* Chrome for Education 32-bit 89.0.4389.72_MSI* Chrome for Education 64-bit 89.0.4389.72_MSI*	No Match in Catalog	No	Inventory.csv
Firefox		58.8.6	2	No Match	No Match Firefox (English US) (x86) 66.0_EXE* Firefox (English UK) (x86) 66.0_EXE* Firefox (Dutch) (x86) 66.0_EXE* Firefox (French) (x86) 66.0_EXE*	No Match in Catalog	No	Inventory.csv
Notepad++		7.9.6	3	No Match	No Match Notepad++ (x86) 7.93_EXE* Notepad++ (x64) 7.93_EXE*	No Match in Catalog	No	Inventory.csv
7-Zip		85.6	4	No Match 7-Zip 19.00.19.00.00.0_MSI 7-Zip 19.00.19.00.00.0_MSI*	No Match 7-Zip (x64) 19.00.00.0_MSI* 7-Zip (x86) 19.00.00.0_MSI*	Success	No	Inventory.csv
Business Contact Manager for Microsoft Outlo...	Microsoft	4.00.12006.00	3	No Match	No Match Business Contact Manager for Microsoft Outlook 2013 (x64) 4.00.12006.00_EXE	No Match in Catalog	No	Inventory.csv
Internet Explorer 10 for Windows 7 64-bit Editi...	Microsoft	10.0.9200.16521	3	No Match	No Match Internet Explorer 10 for Windows 7 64-bit Edition and Windows Server 2008 R2 64-bit Edition (English)	No Match in Catalog	No	Inventory.csv
Internet Explorer 10 for Windows 7 64-bit Editi...	Microsoft	10.0.9200.16521	2	No Match	No Match Internet Explorer 10 for Windows 7 64-bit Edition and Windows Server 2008 R2 64-bit Edition (German)	No Match	No	Inventory.csv
Office 2010 Administrative Template Files (ADM...	Microsoft	14.0.6119.5000	2	No Match	No Match Office 2010 Administrative Template files (ADM, ADMX)	No Match	No	Inventory.csv

## Documented REST APIs

AdminStudio can now supports REST APIs to achieve various functionalities in the product. This API can be called by an external system to integrate with the new backlog capability, as well as to perform a wide range of other actions and issue requests.

AdminStudio continues to offer its PowerShell support via custom cmdlets. A new command (New-ASPackageRequest) is offered to provide the same capability for adding items to the backlog via PowerShell script.

For more details, see [AdminStudio REST APIs](#).

## MSIX App Attach

In support of Windows Virtual Desktop (WVD) environments, you can create VHD or VHDX images in support of App Attach when working with MSIX packages. MSIX App Attach allows you to dynamically attach applications to WVD session without the need for a traditional installation process, saving time, and reducing complexity.

For more details on availability of Microsoft's App Attach feature, [see this article](#).

## MSIX Editor Enhancements

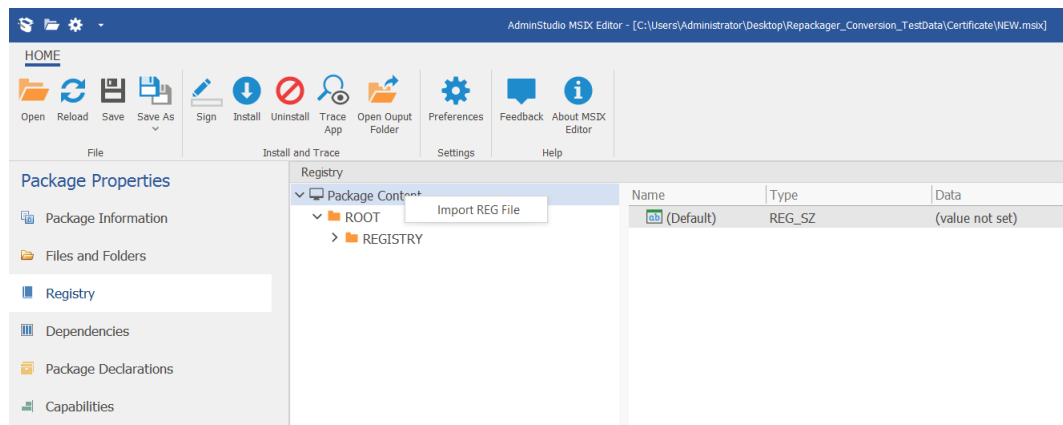
In AdminStudio 2021, the below MSIX Editor improvements are now available:

- [Importing of Registry Files](#)

- The Ability to Add a File or Folder in the Destination Details View
- Support for the Use of Certificate Store to Digital Signing MSIX Package
- Display of the Path and File Name in the Windows Title bar
- Providing of Log File Details in the Output Window

## Importing of Registry Files

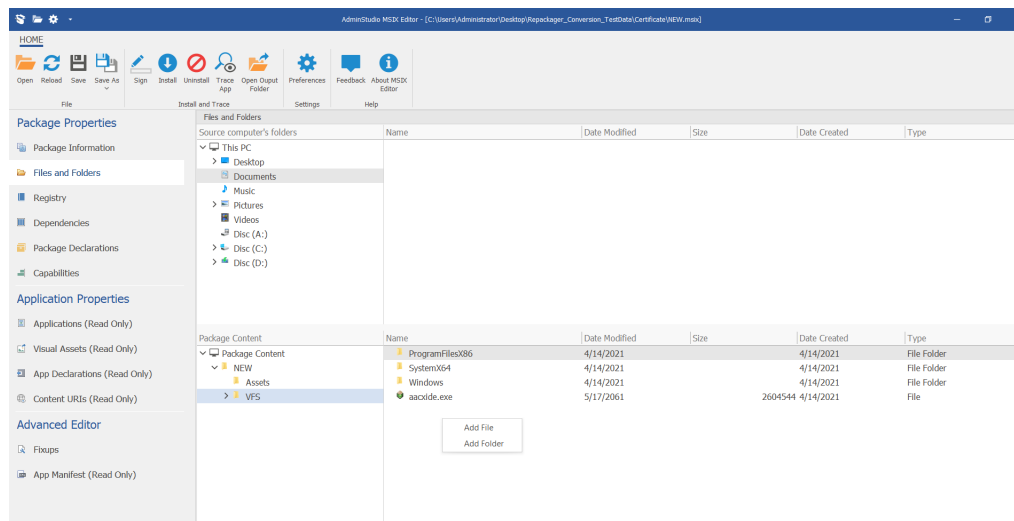
Under Registry view, you can import the registry files for the selected MSIX package. Just right click on the Package Content node of the registry view and choose **Import REG File**.



For more details, see [Importing a Registry File](#).

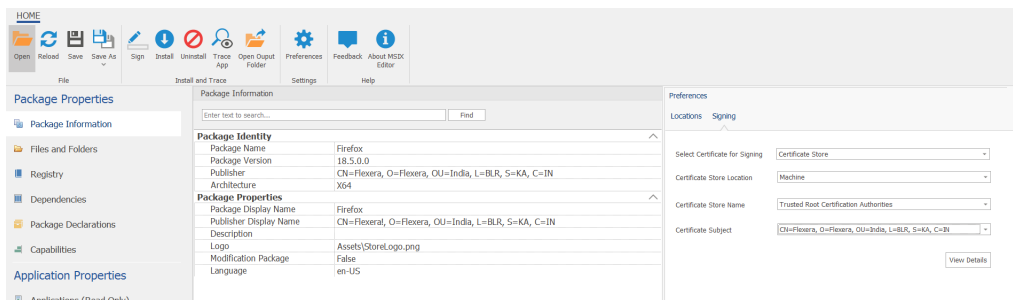
## The Ability to Add a File or Folder in the Destination Details View

Under Files and Folders view, in the Package Content destination folder you can add a file or folder as appropriate.



# Support for the Use of Certificate Store to Digital Signing MSIX Package

In AdminStudio 2021, you can now choose certificates for signing MSIX packages in the MSIX Editor from your local Certificate Store.

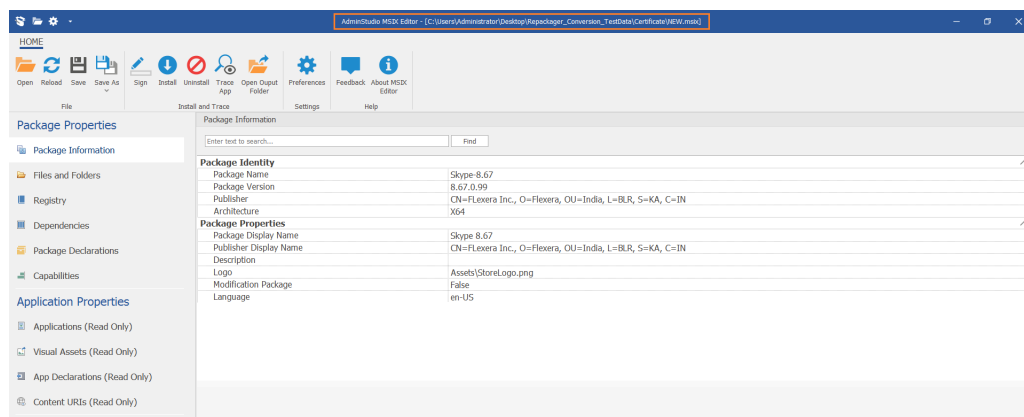


For more information, see [Preferences](#).

In addition to supporting signing from the Certificate Store in the MSIX Editor, it can also be leveraged from the Repackager, the Application Manager and in the Automated Application Converter.

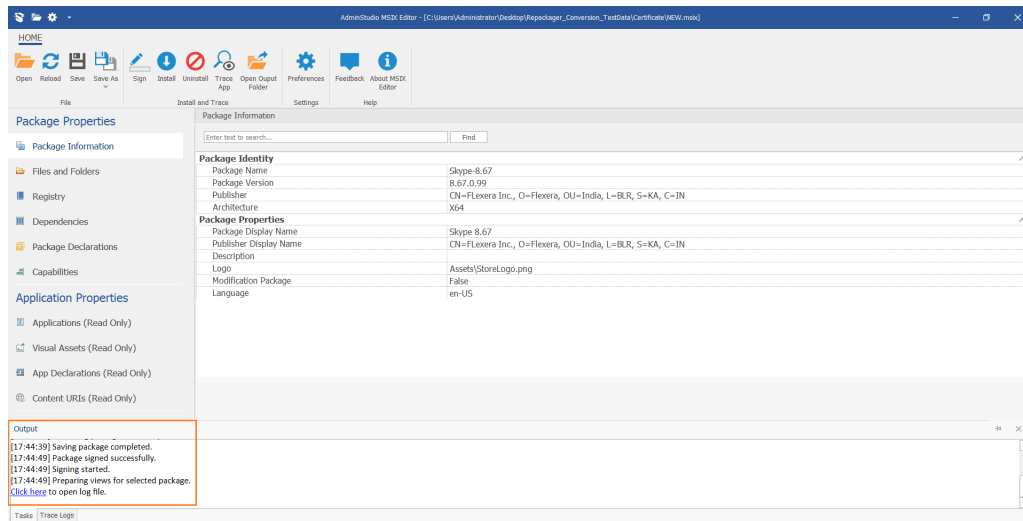
## Display of the Path and File Name in the Windows Title bar

In the windows title bar of the MSIX Editor, you can now see the **File Name and Path** to easily identify which MSIX package is open.



## Providing of Log File Details in the Output Window

In the Output window of the MSIX Editor, you can now see the hyper link saying **Click here** to open a log file. Clicking on the link will launch the log file in a new window to review its contents more easily.



## Support for ConfigMgr 2010

In AdminStudio 2021, you can distribute the following deployment types to the distribution system ConfigMgr 2006 and 2010.

- Microsoft Windows Installer Package (.msi)
- Microsoft App-V Virtual Package (.sft, .appv)
- Apple iOS (local and public store)
- Google Android (local and public store)
- Microsoft UWP app packages (.appx)
- Installation Package (.exe)
- PowerShell wrapped packages (.ps1)
- Microsoft MSIX Package (.msix)

## Support for Windows Server 2019

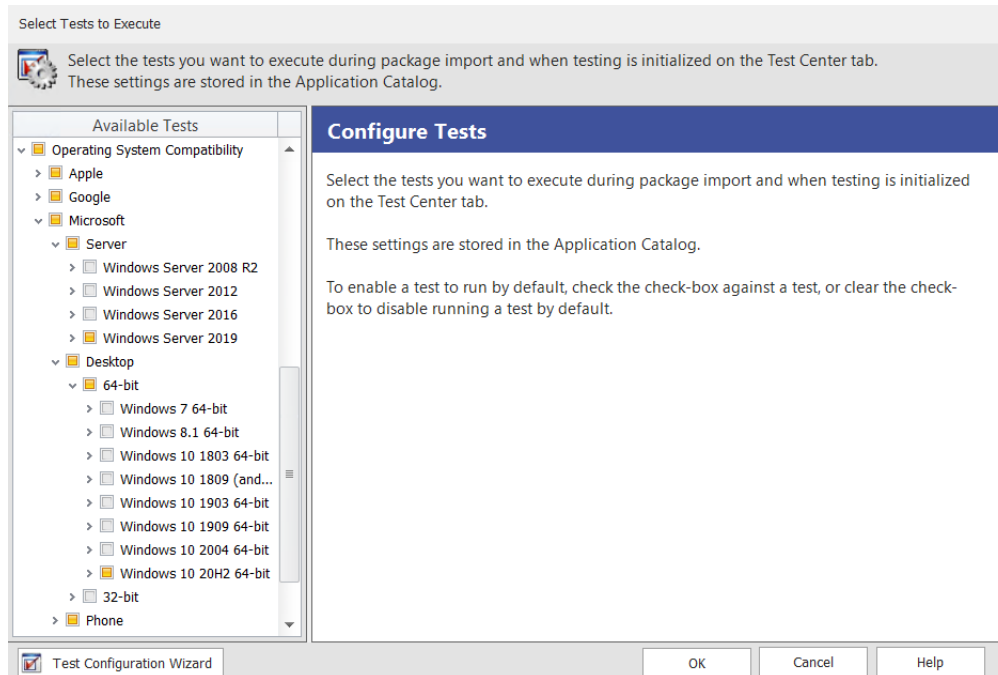
In AdminStudio 2021, you can run application's compatibility testing against the new Windows Server 2019 version for the applications in your catalog.

The new Windows Server 2019 version will appear in the following:

- [Test Selection Wizard](#)
- [Analyze Tab](#)
- [Reports Tab](#)

## Test Selection Wizard

In AdminStudio 2021, you can select Windows Server 2019 build in the Test selection wizard to test the operating system compatibility.

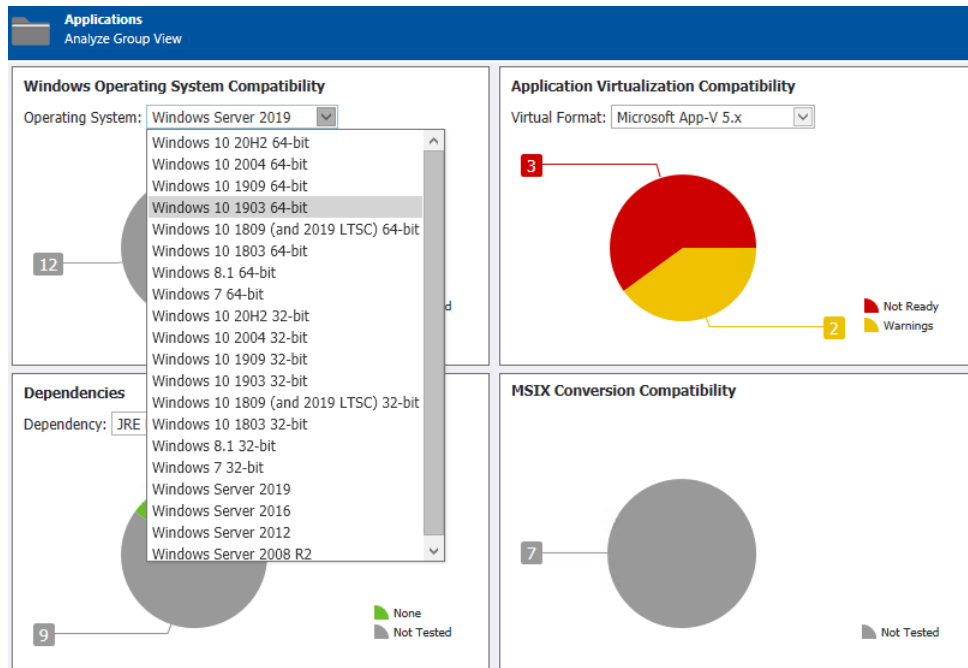


## Analyze Tab

In AdminStudio 2021, you can view the operating system compatibility details for Windows Server 2019 in the following places:

### Group Chart View

In AdminStudio 2021, you can select Windows Server 2019 in the operating system compatibility chart view.



## Summary View

In AdminStudio 2021, you can view the package summary for Windows Server 2019 in the operating system compatibility tab.

Supportability Risks	
Summary	
Test Category	Overall Assessment
Windows 10 20H2 64-bit	●
Windows 10 2004 64-bit	●
Windows 10 1909 64-bit	●
Windows 10 1903 64-bit	●
Windows 10 1809 (and 2019 LTSC) 64-bit	●
Windows 10 1803 64-bit	●
Windows 10 20H2 32-bit	●
Windows 10 2004 32-bit	●
Windows 10 1909 32-bit	●
Windows 10 1903 32-bit	●
Windows 10 1809 (and 2019 LTSC) 32-bit	●
Windows 10 1803 32-bit	●
Windows 8.1 32-bit	●
Windows 7 32-bit	●
Windows Server 2019	✖
Windows Server 2016	●
Windows Server 2012	●
Windows Server 2008 R2	●

## Detail View

In AdminStudio 2021, you can view the result summary for Windows Server 2019 in the operating system compatibility tab.



Supportability Risks		
Windows Server 2019		
53 Tests Executed 4 Errors 145 Warnings 0 Issues Suppressed 149 Total 88 Auto-Fix Available		
Severity	Message	
Warning	1005 - Deferred Execution Custom Action Context: The Windows Installer database is scanned for the presence of any deferred execution custom actions that are not running in system context.	Count: 6
Error	1009 - Microsoft Management Console (MMC) Snap-ins Data Execution Prevention: The Windows Installer database is scanned for the presence of Microsoft Management Console snap-in (.msc) files that are not DEP-aware.	Count: 4
Warning	1013 - Operating System Version Conditions: The Windows Installer database is scanned for the usage of conditions that evaluate to false in Windows Server 2019 in the tables InstallExecuteSequence, MsiLockPermissionsEx, Condition and Component. Redistributables added via a Merge Module and components with 16-bit content are excluded from this scan.	Count: 1
Warning	1016 - Windows Resource Protection Registry Keys: The Windows Installer database is scanned for the presence of registry entries that are subject to Windows Resource Protection.	Count: 81
Warning	1020 - Standard User Changes (User Account Control): The Windows Installer database is scanned for the presence of .exe files (other than installers/updaters) that cause the User Account Control (UAC) prompt to be displayed.	Count: 1
Warning	1022 - Deprecated API Calls: The Windows Installer database is scanned for references to deprecated API calls. Scanned file extensions are: exe, dll, sys, src, drv, cpl, ocx.	Count: 41
Warning	1046 - Restart Manager Files In Use Dialog: The Windows Installer database is scanned for the absence of the Restart Manager Files In Use dialog and MSIRESTARTMANAGERCONTROL property value that disables Restart Manager.	Count: 1
Warning	1048 - Reboot Pending Launch Condition: The Windows Installer database is scanned for the absence of launch conditions that prevent the installation from continuing when a restart is pending.	Count: 1
Error	1052 - Unsigned Executables: The Windows Installer database is scanned for the presence of unsigned executables. Scanned file extensions are: exe, dll, ocx, cab.	Count: 12

## Reports Tab

In AdminStudio 2021, you can see the operating system compatibility for Windows Server 2019 in the following reports:

### Application Readiness Dashboard Report

In AdminStudio 2021, you can see no change in Application Readiness Dashboard report.

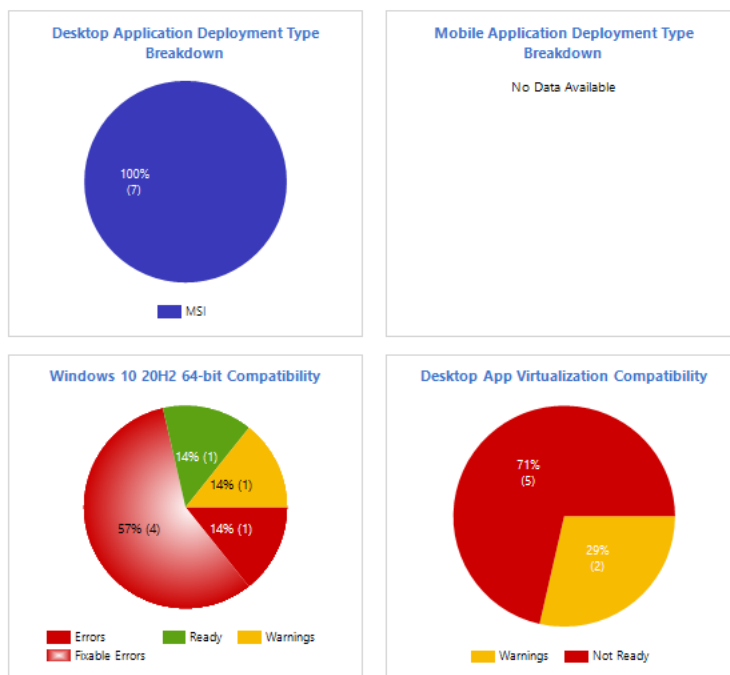
AdminStudio®

#### Application Readiness Dashboard

Catalog Name: GT\_20H2B2\_ST  
Applications: 7  
Groups: 8

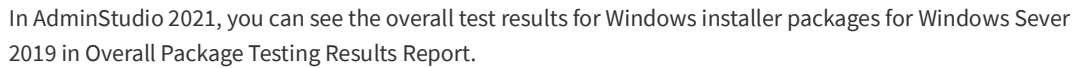
This report shows the deployment type breakdown of the applications in your Application Catalog as well as results of operating system and virtualization compatibility testing for desktop applications. It also shows the results of Windows Installer and App-V best practice testing.

*Note: To open more detailed reports, click on categories in the charts below.*



In AdminStudio 2021, you can see the overall status of operating system application compatibility testing for group applications in Operating System Compatibility Group Dashboard Report.

This report shows the overall status of operating system application compatibility testing for group 'upgraded pkgs' containing 3 packages. Each segment shows the number of packages in its status category.



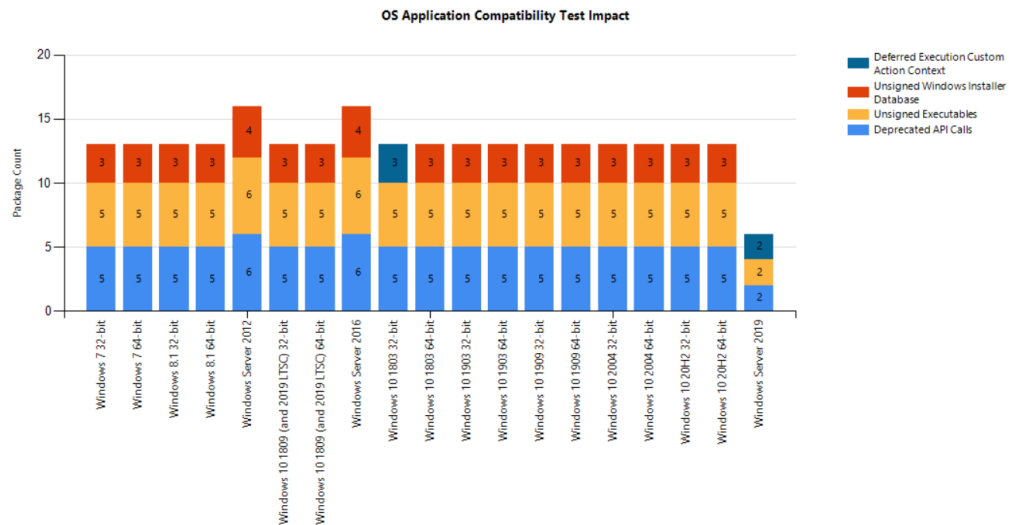
In this report, an icon indicates the test status of each Windows Installer package in the Application Catalog for all Test Center test categories, including OS compatibility, application virtualization compatibility, Windows Installer best practices, and conflict testing. Click on a row to see historical information for a package.

In AdminStudio 2021, you can see the compatibility issues in pie chart format for Windows Server 2019 in Windows Desktop OS Compatibility Dashboard Report.



## Test Impact Report

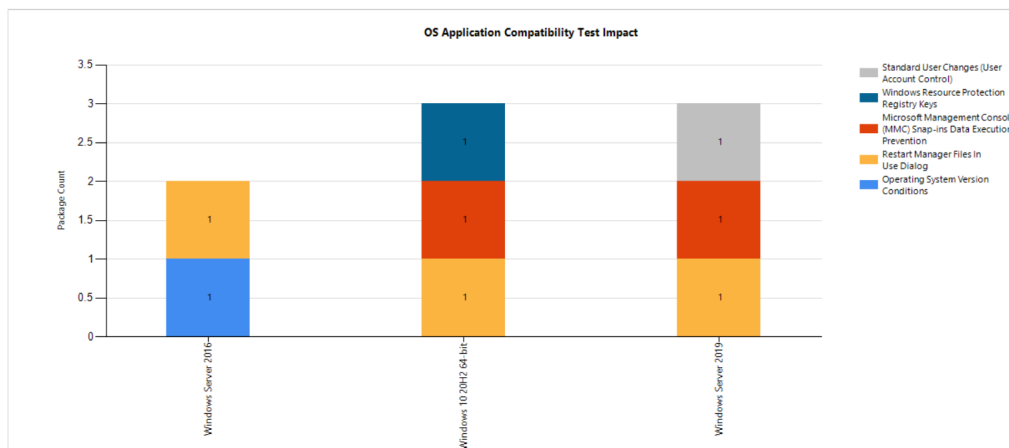
In AdminStudio 2021, you can see the reports of three OS compatibility tests for Windows Server 2019 in Operating System Compatibility by Test Impact Report.



## Test Suppression Report

In AdminStudio 2021, you can see the Windows 10 20H2 64-bit, Windows Server 2016, and Windows Server 2019 for three tests that have been suppressed in Operating System Compatibility by Test Suppression Report.

This report shows the top 3 tests that have been suppressed for the most packages. Click on the chart to see more detailed information for specific operating systems.

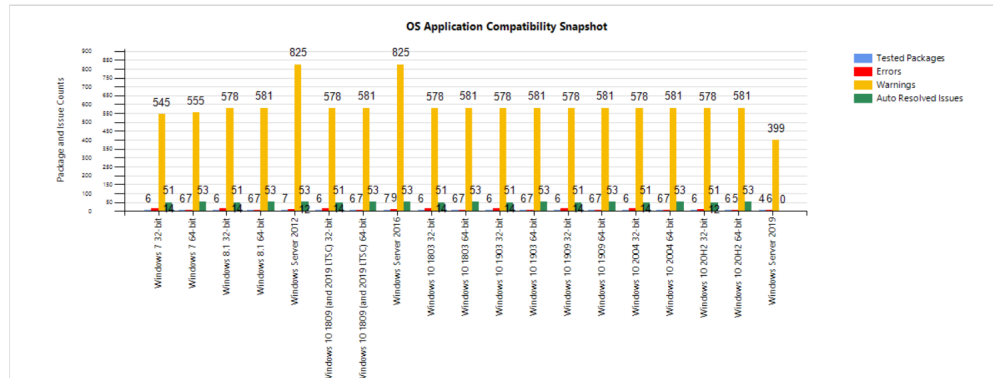


## Snapshot Analysis Report

In AdminStudio 2021, you can see the compatibility testing error and warning for Windows Server 2019 in Operating System Compatibility Snapshot Analysis Report.

## Operating System Application Compatibility Snapshot Analysis

This report shows the total operating system application compatibility testing error and warning status. Click on the chart to view historical snapshots for the selected operating system.



# InstallShield 2020 R3

For more information on InstallShield Release Notes, see the [InstallShield 2020 Release Notes](#).

# Editions

AdminStudio 2021 R2 is available in Standard, Professional, and Enterprise Editions. The following table lists the tools and features available in each of AdminStudio's editions.

Edition	Feature Type	Tools	Functionality
STANDARD	General	<b>Repackager</b>	Repackage applications into Windows Installer format  Perform basic ISO tagging, including creation of tag files
		<b>Package Distribution Wizard</b>	Prepare packages for distribution
		<b>InstallShield 2020 R3</b> (Professional Edition)	Customize Windows Installer packages by either directly editing them or by creating transforms
		<b>Tuner</b>	Customize Windows Installer packages by creating transforms
		<b>Application Isolation Wizard</b>	Resolve component versioning conflicts
	Application Virtualization	<b>Automated Application Converter</b> (Single Application Version)	Convert a package to a virtual application in the following formats: <ul style="list-style-type: none"><li>● Microsoft App-V (4.x and 5.1)</li><li>● Citrix XenApp</li><li>● VMware ThinApp (4.x and 5.x)</li></ul> Convert one package at a time
		<b>Conversion Wizard</b> (Single Application Version)	
		<b>Virtual Package Editor</b>	Edit App-V packages
		<b>MSIX Editor</b>	Edit MSIX packages
		<b>Microsoft App-V Assistant</b> <b>ThinApp Assistant</b> <b>Citrix Assistant</b>	Create a customized virtual package from an InstallShield project

Edition	Feature Type	Tools	Functionality
<b>PROFESSIONAL</b>	Same as <b>Standard Edition</b> , plus:		
	<b>General</b>	<b>Application Manager / Home Tab</b>	<p>Manage applications in an Application Manager database</p> <p>Manage a package's ConfigMgr (Formerly Called as Software Center Configuration Manager) (2012 or ConfigMgr 2002) and Symantec Altiris Client Management Suite deployment data</p> <p>View an application's ConfigMgr (Formerly Called as Software Center Configuration Manager) (2012 or ConfigMgr 2002) deployment status</p> <p>Perform advanced ISO tag file creation, editing, and storage</p>
		<b>Application Manager / Analyze Tab</b>	<p>Perform tests in the following categories:</p> <ul style="list-style-type: none"> <li>Windows Installer Internal Consistency Evaluators</li> <li>Windows Installer Best Practices</li> <li>Application Conflicts</li> </ul> <p>Test and fix one package at a time</p>
		<b>Distribution Wizard</b>	<p>Publish applications to ConfigMgr (Formerly Called as Software Center Configuration Manager) (2012 or ConfigMgr 2002) and Symantec Altiris Management Server.</p>
		<b>OS Snapshot Wizard</b>	<p>Capture basic operating system configuration in an OS Snapshot, which can be imported into the Application Manager to check for potential OS conflicts</p>
		<b>QualityMonitor</b>	<p>Perform Windows Installer testing, including testing in a locked down environment</p>
		<b>Automated Application Converter</b>	<p>Automatically repackage a legacy package (.exe) into a Windows Installer package (.msi)</p>
		(Single Application Version)	<p>Repackage one package at a time</p>
		<b>Conversion Wizard</b>	
		(Single Application Version)	
		<b>Test on Virtual Machine Wizard</b>	<p>Automatically launch a specified virtual machine and install a selected Windows Installer (.msi), App-V package (.appv), or installation executable (.exe) package for testing.</p>

Edition	Feature Type	Tools	Functionality
<b>PROFESSIONAL</b> (Continued)	<b>Application Virtualization</b>	Enhancements to <b>Application Manager / Home Tab</b>	<p>Import virtual packages into Application Manager</p> <p>View virtual package data in Application Manager</p> <p>Manage ConfigMgr (Formerly Called as Software Center Configuration Manager) (2012 or ConfigMgr 2002) deployment data for App-V 4.x and 5.1 packages</p> <p>Manage Citrix XenApp Server deployment data for Citrix XenApp profiles and App-V 4.x packages</p> <p>Manage Symantec Altiris Client Management Suite deployment data for Symantec Workspace and VMware ThinApp packages</p> <p>Manage App-V Server deployment data for App-V 4.x and 5.1 packages</p>
		Enhancements to <b>Application Manager / Analyze Tab</b>	<p>Test packages for compatibility to be virtualized to App-V, ThinApp, and XenApp formats</p> <p>Test App-V packages for best practices</p> <p>Test App-V packages for conflicts with other packages</p>
		Enhancements to <b>Distribution Wizard</b>	<p>Publish applications containing App-V 4.x and 5.1 packages to Microsoft App-V Server</p> <p>Publish applications containing App-V packages to ConfigMgr (Formerly Called as Software Center Configuration Manager) (2012 or ConfigMgr 2002) and Citrix XenApp Server</p> <p>Publish applications containing Citrix XenApp profiles and App-V 4.x packages to Citrix XenApp Server</p> <p>Publish applications containing Symantec Workspace and VMware ThinApp packages to Symantec Altiris Client Management Suite Server</p>

Edition	Feature Type	Tools	Functionality
<b>PROFESSIONAL</b> (Continued)	<b>Application Compatibility Testing</b>	Enhancements to <b>Application Manager / Analyze Tab</b>	<p>Test packages for compatibility with the following operating systems:</p> <ul style="list-style-type: none"> <li>Windows 7 (32-bit and 64-bit)</li> <li>Windows 8.1 (32-bit and 64-bit)</li> <li>Windows 10 1903 (32 bit and 64 bit)</li> <li>Windows 10 1909 (32 bit and 64 bit)</li> <li>Windows 10 1803 (32 bit and 64 bit)</li> <li>Windows 10 1809 (and 2019 LTSC) (32 bit and 64 bit)</li> <li>Windows 10 2004 (32 bit and 64 bit)</li> <li>Windows 10 20H2 (32 bit and 64 bit)</li> <li>Windows Server 2008 R2</li> <li>Windows Server 2012 and 2012 R2</li> <li>Windows Server 2016</li> <li>Windows Server 2019</li> </ul> <p>On the <b>Operating System Compatibility</b> tab of the Analyze <b>Deployment Type View</b>, you can see detailed data for only the last package tested; for all other packages in the Application Manager, this tab is blank (even if the package has been previously tested)</p> <p>Ability to display Microsoft Application Compatibility Toolkit (ACT) database test results on <b>ACT Summary</b> tab of the <b>Analyze Deployment Type View</b></p>
	<b>Mobile App and macOS Support</b>	Enhancements to <b>Application Manager / Home Tab</b>	<ul style="list-style-type: none"> <li>Import of the following macOS desktop applications into the Application Manager:               <ul style="list-style-type: none"> <li>Apple installer package (.pkg file)</li> <li>Apple disk image (.dmg file)</li> <li>Mac App Store app (public store link)</li> </ul> </li> <li>Import of the following mobile app formats into the Application Manager:               <ul style="list-style-type: none"> <li>Apple iOS mobile apps (local and public store link)</li> <li>Google Android mobile apps (local and public store link)</li> <li>Microsoft Windows Store mobile apps (local and public store link)</li> </ul> </li> </ul>



Edition	Feature Type	Tools	Functionality
<b>PROFESSIONAL</b> (Continued)	<b>Mobile App and macOS Support</b> (Continued)	Enhancements to <b>Application Manager / Home Tab</b> (Continued)	<ul style="list-style-type: none"> <li>● Ability to import iOS Enterprise Policy Configuration files, view their settings, and determine the policy compatibility of iOS mobile apps.</li> <li>● Ability to view iOS and Android mobile app reporting on feature use, device compatibility, and OS compatibility.</li> <li>● Ability to customize Apple Installer Package PKG installer settings</li> <li>● Ability to view deployment data for Windows Store mobile apps, including detection methods and framework customizations</li> <li>● Ability to manage AirWatch Server deployment data for both Apple iOS and Google Android mobile apps (local and public store link)</li> <li>● Ability to view and modify Casper deployment settings for macOS desktop applications</li> </ul>
		Enhancements to <b>Application Manager / Analyze Tab</b>	<ul style="list-style-type: none"> <li>● Test Apple iOS mobile apps for best practices</li> <li>● Test Apple iOS, Microsoft Windows, and Google Android mobile apps for risk assessment</li> <li>● Test Apple iOS, Microsoft Windows, and Google Android mobile apps for operating system compatibility</li> <li>● Test macOS desktop applications (.pkg, .dmg, and Mac App Store apps) for operating system compatibility and best practices</li> </ul>
		Enhancements to <b>Distribution Wizard</b>	<p>Ability to publish applications containing the following mobile app formats to ConfigMgr (Formerly Called as Software Center Configuration Manager) (2012 R2 or ConfigMgr 2002) and AirWatch Server:</p> <ul style="list-style-type: none"> <li>● Apple iOS mobile apps (local and public store link)</li> <li>● Google Android mobile apps (local and public store link)</li> </ul> <p>Ability to publish applications containing the following mobile app format to ConfigMgr (Formerly Called as Software Center Configuration Manager) (2012 R2 or ConfigMgr 2002):</p> <ul style="list-style-type: none"> <li>● Windows Store (local and public store link)</li> <li>● Microsoft UWP app packages (.appx)</li> </ul>

Edition	Feature Type	Tools	Functionality
<b>ENTERPRISE</b>	Same as <b>Professional Edition</b> , plus:		<p>Ability to publish applications containing the following package formats to JAMF Casper Suite:</p> <ul style="list-style-type: none"> <li>• Mac App Store app (public store link)</li> <li>• Apple installer package (.pkg file)</li> <li>• Apple disk image (.dmg file)</li> </ul>
	<b>General</b>	<b>InstallShield 2020 R3</b> (Premier Edition instead of Professional Edition)	Advanced customization of Windows Installer packages by either directly editing them or by creating transforms
		<b>Application Manager / Reports Tab</b>	Advanced reports including detailed summary and dashboard reports on Analyze test results, package data, and deployment information
		<b>Platform API</b>	Use to integrate your existing .NET applications or scripting environments like Microsoft PowerShell with AdminStudio
		<b>Software Repository</b>	Secure storage system for AdminStudio package data, including version management
		<b>Reports</b> (Web Tool)	Generate reports on packages stored in the Application Manager, including reports using custom SQL queries
		<b>Security Console</b> (Web Tool)	<p>Manage AdminStudio user accounts and directory services</p> <p>Manage AdminStudio roles and permissions</p>
		<b>Automated Application Converter</b> (Multiple Application Version)  <b>Conversion Wizard</b> (Multiple Application Version)	<p>Automatically repackage legacy packages (.exe) into Windows Installer packages (.msi)</p> <p>Ability to perform automated repackaging of multiple packages at a time</p>
	<b>Application Virtualization</b>	<b>Automated Application Converter</b> (Multiple Application Version)  <b>Conversion Wizard</b> (Multiple Application Version)	Ability to perform automated conversion of multiple packages at a time

Edition	Feature Type	Tools	Functionality
<b>ENTERPRISE</b> (Continued)	<b>Application Virtualization</b> (Continued)	Enhancements to <b>Application Manager / Reports</b>	Includes the Application Virtualization Compatibility Dashboard report  The Application Readiness Dashboard includes an Application Virtualization Compatibility summary chart and App-V Best Practices and App-V Conflicts test results summary charts.
	<b>Application Compatibility Testing</b>	Enhancements to <b>Application Manager / Analyze Tab</b>	Ability to test and fix multiple packages or groups of packages simultaneously  Ability to view package-level test details for <b>Operating System Compatibility</b> and <b>Browser Compatibility</b> tests for all packages in the Application Manager, not just the last one tested  Import of web applications and web deploy packages into the Application Manager  Test web applications for compatibility with the following browsers: <ul style="list-style-type: none"> <li>● Internet Explorer 11</li> <li>● Microsoft Edge</li> </ul> Test web deploy packages for compatibility with the following platforms: <ul style="list-style-type: none"> <li>● Windows Server 2012 R2</li> <li>● Windows Server 2016</li> <li>● Windows Server 2019</li> <li>● Microsoft Azure Application Services</li> </ul> Test web deploy packages for best practices.  Test web deploy packages for browser compatibility.
		Enhancements to <b>Application Manager / Reports</b>	Display of Microsoft ACT database test results on the Reports tab
		Enhancements to <b>Platform API</b>	Ability to use the Test-ASPackage and Resolve-ASPackage Platform API commands to perform batch package testing and issue resolution.

# System Requirements

This section lists the requirements for the AdminStudio machine, Application Catalog database server, Web server, and virtual machines.

- [Compatibility Summary](#)
- [AdminStudio Machine](#)
- [Distribution Systems](#)
- [Application Catalog Database Server](#)
- [AdminStudio Enterprise Server / Workflow Manager Server](#)
- [Automated Application Converter](#)

## Compatibility Summary

AdminStudio 2021 R2 supports the following versions of the listed software.

Category	Item	Supported Versions
<b>Operating System for:</b> <ul style="list-style-type: none"><li>• <b>AdminStudio</b></li><li>• <b>Standalone Repackager</b></li><li>• <b>Standalone Tuner</b></li></ul>	<b>Microsoft Windows</b>	<ul style="list-style-type: none"><li>• Windows 7</li><li>• Windows 8.1</li><li>• Windows 10 1803 (32 bit and 64 bit)</li><li>• Windows 10 1809 (and 2019 LTSC) (32 bit and 64 bit)</li><li>• Windows 10 1903 (32 bit and 64 bit)</li><li>• Windows 10 1909 (32 bit and 64 bit)</li><li>• Windows 10 2004 (32 bit and 64 bit)</li><li>• Windows 10 20H2 (32 bit and 64 bit)</li><li>• Windows Server 2008 R2</li><li>• Windows Server 2012</li><li>• Windows Server 2012 R2</li><li>• Windows Server 2016</li><li>• Windows Server 2019</li></ul>
<b>AdminStudio Web Server Operating System (AdminStudio Enterprise Server, AdminStudio Inventory and Rationalization, Workflow Manager)</b>	<b>Microsoft Windows Server</b>	<ul style="list-style-type: none"><li>• Windows Server 2008 R2</li><li>• Windows Server 2012</li><li>• Windows Server 2012 R2</li><li>• Windows Server 2016</li><li>• Windows Server 2019</li></ul>

Category	Item	Supported Versions
Application Catalog Database	Microsoft SQL Server	● 2008 R2
		● 2012
		● 2016
		● 2017
		● 2019
Flexera Software Product Integration	FlexNet Manager Platform / FlexNet Manager Suite (On Premises)	9.2 SP1 or later
	FlexNet Manager Suite (Cloud)	2014 or later
	App Portal	7.5.3 or later
	Workflow Manager	2015 or later
	Flexera Service Gateway	1.0 or later
Virtual Machines for Virtualization	VMware Workstation	6.5 or later
	VMware ESXi	VMware ESX/ESXi Server, Version 5.5 or later
	VMware vSphere	5.5
	Microsoft Hyper-V Server	2008 R2 or later
Virtual Formats	App-V	App-V 4.5 through 5.1
	VMware ThinApp	4.x and 5x
Microsoft App-V Sequencer	App-V Sequencer	5.1

Category	Item	Supported Versions
<b>Desktop Distribution (Applications)</b>	<b>ConfigMgr (Formerly Called as Software Center Configuration Manager)</b>	2007, 2012 R2, 2012 R2 SP1, ConfigMgr 2002, ConfigMgr 2006, and ConfigMgr 2010
	<b>Microsoft App-V Server</b>	5.1
	<b>Symantec Altiris Client Management Suite</b>	7.5
	<b>Citrix XenApp Server</b>	6.5
<b>Desktop Distribution (Packages)</b>	<b>Novell ZENworks Configuration Management</b>	10 and 11
	<b>LANDESK Management Suite</b>	9
	<b>ConfigMgr (Formerly Called as Software Center Configuration Manager)</b>	2007, 2012 R2, 2012 R2 SP1, ConfigMgr 2002, ConfigMgr 2006, and ConfigMgr 2010
	<b>Altiris Notification Server</b>	6.5
	<b>Marimba NCP</b>	4.7.2
<b>Mobile Distribution</b>	<b>AirWatch Server</b>	6.5
	<b>Microsoft App-V Server</b>	5.1
	<b>ConfigMgr (Formerly Called as Software Center Configuration Manager)</b>	2012 R2, 2012 R2 SP1, ConfigMgr 2002, ConfigMgr 2006, and ConfigMgr 2010

Category	Item	Supported Versions
<b>Desktop Operating Systems</b>  Supported for compatibility testing	<b>Windows</b>	<ul style="list-style-type: none"> <li>7 (32-bit and 64-bit)</li> <li>8.1 (32-bit and 64-bit)</li> <li>10 1803 (32 bit and 64 bit)</li> <li>10 1809 (and 2019 LTSC) (32 bit and 64 bit)</li> <li>10 1903 (32 bit and 64 bit)</li> <li>10 1909 (32 bit and 64 bit)</li> <li>10 2004 (32 bit and 64 bit)</li> <li>10 20H2 (32 bit and 64 bit)</li> </ul>
	<b>Windows Server</b>	<ul style="list-style-type: none"> <li>2008 R2</li> <li>2012</li> <li>2016</li> <li>2019</li> </ul>
	<b>Mac OS</b>	<ul style="list-style-type: none"> <li>10.11 (El Capitan)</li> <li>10.12 (Sierra)</li> </ul>
<b>Mobile Operating Systems</b>  Supported for compatibility testing	<b>Apple iOS</b>	<ul style="list-style-type: none"> <li>6 (32-bit)</li> <li>7 (32-bit and 64-bit)</li> <li>8 (32-bit and 64-bit)</li> <li>9 (32-bit and 64-bit)</li> <li>10 (32-bit and 64-bit)</li> </ul>
	<b>Google Android</b>	<ul style="list-style-type: none"> <li>4.1 Jelly Bean</li> <li>4.2 Jelly Bean</li> <li>4.3 Jelly Bean</li> <li>4.4 KitKat</li> <li>5.0 Lollipop</li> <li>6.0 Marshmallow</li> <li>7.0 Nougat</li> </ul>
	<b>Windows Phone</b>	<ul style="list-style-type: none"> <li>8.1</li> <li>10</li> </ul>





Category	Item	Supported Versions
<b>Internet Browsers</b> Supported for browser compatibility testing	<b>Microsoft Internet Explorer</b>	11
	<b>Microsoft Edge</b>	Current version
<b>Internet Browsers</b> For viewing AdminStudio Enterprise Server, AdminStudio Inventory and Rationalization, and Workflow Manager	<b>Mozilla Firefox</b>	Firefox for Windows 25.0 or later
	<b>Google Chrome</b>	Chrome for Windows 33.0 or later
	<b>Microsoft Internet Explorer</b>	Microsoft Internet Explorer 9.0 or later
	<b>Microsoft Edge</b>	Current version
	<b>Apple Safari</b>	Safari for Mac OS X and iOS



Category	Item	Supported Versions
Mobile Devices	<b>Apple iOS Devices</b>	<ul style="list-style-type: none"> <li>● iPad WiFi</li> <li>● iPad 2 3G and iPad 2 WiFi</li> <li>● iPad Third Gen and iPad Third Gen 4G</li> <li>● iPad Fourth Gen and iPad Fourth Gen 4G</li> <li>● iPad Fifth Gen and iPad Fifth Gen 4G</li> <li>● iPad Sixth Gen and iPad Sixth Gen LTE</li> <li>● iPad Pro 9.7, 9.7 LTE</li> <li>● iPad Pro 12.9, 12.9 LTE</li> <li>● iPad Mini</li> <li>● iPad Mini 3 and iPad Mini 3LTE</li> <li>● iPad Mini 4G</li> <li>● iPad Mini 4 and 4LTE</li> <li>● iPad Mini Retina and iPad Mini Retina 4G</li> <li>● iPhone 4S</li> <li>● iPhone 5, iPhone 5c, and iPhone 5s</li> <li>● iPhone 6 and iPhone 6 Plus</li> <li>● iPhone 6s and iPhone 6s Plus</li> <li>● iPhone SE</li> </ul>
	<b>Google Android Devices</b>	<ul style="list-style-type: none"> <li>● Samsung Galaxy Grand 2</li> <li>● Google Nexus 5, 5X, 6, 6P, 9</li> <li>● Samsung Galaxy Note 2, 3, 4, 5, 6, 7</li> <li>● Samsung Galaxy Note Pro</li> <li>● Samsung Galaxy S4, S5, S7</li> <li>● Samsung Galaxy Tab S2, 3</li> </ul>
	<b>Windows Phone Devices</b>	<ul style="list-style-type: none"> <li>● Microsoft Lumia535</li> <li>● Microsoft Lumia 930</li> <li>● Microsoft SurfacePro 3</li> </ul>
API	<b>PowerShell</b>	4.x
Application Compatibility	<b>Microsoft Application Compatibility Toolkit (ACT)</b>	5.6

# AdminStudio Machine

The following table lists the recommended system configuration for a machine running AdminStudio.

Item	Description
Processor	32-bit or 64-bit processor at 2 GHz or greater  <b>Note</b> • All of the AdminStudio tools run on 64-bit Windows operating systems. To repackage 64-bit applications or create 64-bit App-V packages, install AdminStudio on a 64-bit Windows operating system. It should be minimum of dual core processor.
RAM	4 GB
Hard Disk	4 GB of free space
Display	Designed for XGA at 1024 x 768 resolution or higher  <b>Note</b> • For the best user experience, a monitor resolution of 1920 x 1080 or greater is recommended.
MSXML	MSXML 6.0  <b>Note</b> • MSXML is installed by the AdminStudio installer.
Operating Systems	<ul style="list-style-type: none"><li>• Windows 7</li><li>• Windows 8 and Windows 8.1</li><li>• Windows 10</li><li>• Windows Server 2008 R2</li><li>• Windows Server 2012, Windows Server 2012 R2, Windows Server 2016</li><li>• Windows Server 2019</li></ul>  <b>Note</b> • Support for Windows Vista was removed due to a modification made by Microsoft. For more information, see the following articles: <ul style="list-style-type: none"><li>• <a href="#">An ADO application does not run on down-level operating systems after you recompile it on a computer that is running Windows 7 SP 1 or Windows Server 2008 R2 SP 1 or that has KB983246 installed [Microsoft Article 2517589]</a></li><li>• <a href="#">A Better Solution for the Windows 7 SP1 ADO GUID Changes</a></li></ul>
Browser	Microsoft Internet Explorer 7.0 or later


Item	Description
Privileges	Administrative privileges on the system

## Distribution Systems

AdminStudio supports distribution of both applications and packages.

### Application Distribution

AdminStudio supports the following distribution systems for the distribution of applications.

Distribution System	Support Version(s)
<b>ConfigMgr (Formerly Called as Software Center Configuration Manager)</b>	2007, 2012 R2, 2012 R2 SP1, ConfigMgr 2002, ConfigMgr 2006, and ConfigMgr 2010
<b>Symantec Altiris Client Management Suite</b>	7.5
<b>JAMF Casper Suite Server</b>	9.9
<b>Citrix XenApp Server</b>	6.5
<b>AirWatch Server</b>	6.5 [Mobile applications only]
<b>Microsoft App-V Server</b>	5.1
 <p><b>Note</b> • In order for you to distribute packages to a Microsoft App-V Server, the WinRM service must be running, and the App-V Server must be in the list of trusted hosts. Both of these can be accomplished from PowerShell by running the following command:</p> <pre>set-item wsman:\localhost\Client\TrustedHosts -value &lt;Machine Name&gt;</pre>	

### Package Distribution

AdminStudio supports the following distribution systems for the distribution of packages using the Legacy Distribution Wizard.

Distribution System	Supported Versions
<b>Altiris Notification Server</b>	Version 6.5
<b>LANDESK Management Suite</b>	Version 9

Distribution System	Supported Versions
Novell ZENworks Configuration Management	Versions 10 and 11
ConfigMgr (Formerly Called as Software Center Configuration Manager)	2007, 2012 R2, 2012 R2 SP1, ConfigMgr 2002, ConfigMgr 2006, and ConfigMgr 2010


## Application Catalog Database Server

The following table lists the recommended system configuration for a database server to store AdminStudio Application Catalog databases.



**Note** • While minimum requirements are listed below, the recommended system configuration for a database server is dependent upon the number of users and the number of packages that will be imported into the Application Catalog database.

Item	Description
<b>Processor</b>	32-bit or 64-bit processor at 2 GHz or greater
<b>RAM</b>	4 GB or greater (8 GB preferred)
<b>Hard Disk Space</b>	80 GB or greater
<b>Operating System</b>	Windows Server 2008 R2 or later (Windows Server 2012 or later preferred)


Item	Description
<b>Database Software</b>	<p>SQL Server 2008 R2 or later databases, including SQL Server 2012, SQL Server 2014, SQL Server 2016, SQL Server 2017, and SQL Server 2019.</p> <ul style="list-style-type: none"> <li> <b>Dictionary sort order</b>—SQL Server must be installed with case-insensitive dictionary sort order 52 on Code Page 1252 for non-Unicode data. For more information, use the <code>sp_helpsort</code> T-SQL command, which returns the following:    Latin1-General, case-insensitive, accent-sensitive, kanatype-insensitive, width-insensitive for Unicode Data, SQL Server Sort Order 52 on Code Page 1252 for non-Unicode data </li> <li> <b>Collation setting</b>—SQL_Latin1_General_CP1_CI_AS is the required collation setting for AdminStudio database server. It is the only supported collation. </li> </ul>
	 <p><b>Note</b> • Before attempting to connect to an existing Microsoft SQL Server, open SQL Server Configuration Manager and make sure that the following three protocols are enabled:</p> <ul style="list-style-type: none"> <li>Shared Memory</li> <li>Named Pipes</li> <li>TCP/IP</li> </ul>


## AdminStudio Enterprise Server / Workflow Manager Server

The following table lists the system requirements for the Web server that hosts the Workflow Manager Data Web service and the actual Workflow Manager Web site and/or AdminStudio Enterprise Server.



**Note** • While minimum requirements are listed below, the recommended system configuration for this web server is dependent upon the number of users.

Item	Description
<b>Processor</b>	<p>32-bit or 64-bit processor at 2 GHz or greater</p>  <p><b>Note</b> • AdminStudio Enterprise Server / Workflow Manager runs in 32-bit mode on a 64-bit OS.</p>
<b>RAM</b>	4 GB or greater (8 GB preferred)
<b>Hard Disk Space</b>	100 GB or greater

Item	Description
<b>Operating System</b>	Windows Server 2008 R2 or later / English base language (Windows Server 2012 or later preferred)
<b>IIS</b>	IIS 7.0 or later
<b>.NET</b>	.NET Framework 4.0
<b>MSXML</b>	MSXML 6.0
	 <p><b>Note</b> • MSXML is installed by the AdminStudio Enterprise Server / Workflow Manager installer.</p>

## Automated Application Converter

This section lists the requirements for the virtual machines used by Automated Application Converter to perform repackaging. Also, the software requirements for specific virtual technologies are listed.

- [Virtual Machine Requirements](#)
- [Virtual Technology Requirements](#)

## Virtual Machine Requirements



**Edition** • Automated Application Converter is included with AdminStudio Application Virtualization.

Automated Application Converter performs automated repackaging on virtual machines. This section lists the virtual machine platform and virtual machine image system requirements.

- [Supported Virtual Machine Platforms](#)
- [VMware Requirements](#)
- [Microsoft Hyper-V Server Requirements](#)
- [Virtual Machine Image Requirements](#)

## Supported Virtual Machine Platforms

The Automated Application Converter supports automated repackaging on virtual machines from the following platforms:

- VMware ESX/ESXi Server, Version 5.5 or later
- VMware Workstation 6.5 or later
- VMware vSphere 5.5
- Microsoft Hyper-V Server 2008 R2 or later

## VMware Requirements

As described above, Automated Application Converter supports automated repackaging on VMware ESX/ESXi Server and VMware Workstation.

- [VMware REST API Requirement](#)
- [VMware ESX/ESXi Server Permission Requirements](#)
- [vSphere 5.5 Account Requirements](#)

### VMware REST API Requirement

In order for Automated Application Converter to perform automated repackaging, it needs to communicate with the virtualization technology that you are using. If you are using VMware virtualization technology (VMware ESX or ESXi Server or a local VMware Workstation), the VMware REST APIs needs to be enabled on the same machine as the Automated Application Converter.



**Note** • When using VMware Workstation, it is recommended that you install VMware Workstation on the same machine as Automated Application Converter so that Automated Application Converter will use the version of the REST API that was designed for that specific version of VMware Workstation. Although it is likely that newer versions of the REST API will also work, it seems that the best approach is for Automated Application Converter to use the version of the REST API that was bundled with your version of VMware Workstation.

### VMware ESX/ESXi Server Permission Requirements

If you plan to use a VMware ESX/ESXi Server in conjunction with Automated Application Converter, make sure that the account that you use to log in to this server has the permissions/roles needed to automatically open a VM using VMware REST API. The account needs to either have an administrator role assigned or, at least, have the following three roles assigned:

- All Privileges/Virtual Machine/State/Create Snapshot
- All Privileges/Virtual Machine/State/Delete Snapshot
- All Privileges/Virtual Machine/Interaction/Console Interaction

If the login account does not have these permissions/roles, Automated Application Converter will be unable to automatically boot up a virtual machine on that server.

## vSphere 5.5 Account Requirements

In order to make Automated Application Converter (AAC) work with VMware virtual machines residing under vSphere 5.5, there are certain minimum permissions required for the vSphere user account. To assign these permissions to a vSphere user account, perform the following steps:



### Task

**To configure a vSphere 5.5 account to be used with Automated Application Converter:**

1. In vSphere 5.5, open the **Assign Permissions** dialog box and assign a user the **Virtual machine power user (sample)** role, which consists of the following permissions:

Category	Permission	
Datastore	● Browse datastore	
Global	● Cancel task	
Scheduled task	● Create task	● Remove task
	● Modify task	● Run task
Virtual machine > Configuration	● Add existing disk	● Modify device settings
	● Add new disk	● Remove disk
	● Add or remove device	● Rename
	● Advanced	● Reset guest information
	● Change CPU count	● Settings
	● Change resource	● Upgrade virtual machine compatibility
	● Disk lease	
	● Memory	
Virtual machine > Interaction	● Answer question	● Power off
	● Configure CD media	● Power on
	● Configure floppy media	● Reset
	● Console interaction	● Suspend
	● Device connection	● VMware Tools install
	● Guest operating system management by REST API	
Virtual machine > Snapshot management	● Create snapshot	● Rename snapshot
	● Remove snapshot	● Revert to snapshot

2. Also give the user account read-only access to the rest of the server.



## Microsoft Hyper-V Server Requirements

As described above, Automated Application Converter supports automated repackaging on Microsoft Hyper-V Server. When preparing a Hyper-V Server for use with Automated Application Converter, make sure that the following conditions are met:

- **Configuration tools**—Verify that the Hyper-V configuration tools are installed on the Hyper-V server machine. These tools can be installed using the Microsoft Hyper-V Management Console.
- **Connection**—Verify that you can successfully connect to the Hyper-V Server from the machine where AdminStudio Automated Application Converter is installed.
- **Permissions**—Make sure that the Hyper-V Server user has the following permissions to perform operations on the Hyper-V machines:
  - Permission to create/restore/delete VM snapshots
  - Permission to start and stop virtual machines
  - Permission to access console sessions
- **Configuration settings**—Connecting to a WMI namespace on a remote computer running Windows Vista or Windows Server 2008 may require changes to configuration settings. Check the following configuration settings on the AdminStudio machine as well as on the Hyper-V Server machine:
  - Windows Firewall Settings
  - User Account Control (UAC) Settings
  - DCOM Settings
  - Common Information Model Object Manager (CIMOM) Settings

For detailed information, see [Connecting to WMI Remotely](#) at:

[http://msdn.microsoft.com/en-us/library/aa822854\(VS.85\).aspx](http://msdn.microsoft.com/en-us/library/aa822854(VS.85).aspx)

## Virtual Machine Image Requirements

Automated Application Converter uses virtual machines to perform automated repackaging. These virtual machines have the following requirements:

### Virtual Machine System Requirements

When creating a virtual machine image that will be hosted on one of the virtual machine platforms listed above, the recommended minimum requirements should meet those required by the applications you are trying to repackage. Since you repackage on the target deployment platform, the virtual machine image should closely resemble the target deployment environment.

### Preparing Your Virtual Machines for Use With the Automated Application Converter

You need to prepare each virtual machine that you are going to use with the Automated Application Converter to perform automated repackaging by running the Virtual Machine Preparation setup and by creating a snapshot. For instructions, see [Preparing Your Virtual Machines for Use With the Automated Application Converter](#).

## Virtual Technology Requirements

In order to convert to some virtual formats, there are some software requirements:

Virtual Format	Requirement
<b>App-V 5.1</b>	<ul style="list-style-type: none"><li>● <b>Conversion</b>—To convert a package to App-V 5.1 format using Automated Application Converter's <b>App-V 5.x with Sequencer</b> method, the Microsoft Application Virtualization 5.1 Sequencer must be installed on the virtual machine where the conversion will take place.</li><li>● <b>Upgrade</b>—To upgrade an imported App-V 4.x package to App-V 5.1 format directly from Application Manager using the <b>App-V Upgrade Wizard</b>, the Microsoft Application Virtualization 5.1 Sequencer must be installed on the same machine as AdminStudio.</li><li>● <b>Testing</b>—To test an App-V package using Automated Application Converter, the Microsoft Application Virtualization 5.1 Client must be installed on the same machine as AdminStudio.</li></ul>
<b>VMware ThinApp</b>	To convert a package to VMware ThinApp format, VMware ThinApp must be installed on the same machine as AdminStudio, and all license agreements must have been accepted.

## Downloading AdminStudio Installers

You can download the installers for AdminStudio, AdminStudio Service Packs, Standalone Repackager, Standalone Quality Monitor, and the FlexNet Licensing Server from the **Flexera Software Product and License Center**:

<https://flexerasoftware.flexnetoperations.com>

For information on using the Flexera Software Product and License Center, see the **Download and Licensing Instructions for AdminStudio**:

<https://docs.flexera.com/plc/en/adminstudio.htm>

# AdminStudio 2021 Evaluation Restrictions

When you run AdminStudio in trial/evaluation mode, all of the features in the AdminStudio Enterprise Edition tools are fully available, with the following restrictions:

- **Can create only one Application Catalog**—You are permitted to create only one Application Catalog, and it must be named AdminStudio Evaluation Catalog.
- **Ten package import limit**—Only 10 total packages (of one or more deployment types) can be imported into the Application Catalog.
- **Package deletion not permitted**—After you import a package into the Application Catalog, you are not permitted to delete it.
- **AdminStudio Platform API support is disabled**—All platform support is disabled.

## Known Issues

The following table lists the known issues in AdminStudio 2021:

Issue	Description
<b>IOJ-2191665</b>	Launching of Tuner works from the Start menu but not from the Application Manager of the AdminStudio Tools /Options >>Tuner.
<b>IOJ-2200190</b>	<p>The uninstall command line for MSI packages imported from Package Feed Module contain the full path for msixec.exe. Upon wrapping such packages, this full path is set as value for <b>-Parameters</b> when passed to the <b>Execute-MSI</b> cmdlet for uninstallation in the PowerShell wrapper script. The execution of <b>Execute-MSI</b> during uninstallation fails since the value of <b>-Parameters</b> is incorrect eventually causing the uninstallation to fail.</p> <p><b>Workaround:</b> Edit the PowerShell wrapper script to set the value of <b>-Parameters</b> to <b>'/q'</b> for <b>Execute-MSI</b> cmdlet in the uninstallation section of the script.</p>

## Resolved Issues

The following table lists the customer issues that were resolved in AdminStudio 2021:

Issue	Description
<b>IOJ-2188821</b>	Repackaged report created after repackaging has junk characters.

# Legal Information

## Copyright Notice

Copyright © 2021 Flexera

This publication contains proprietary and confidential information and creative works owned by Flexera and its licensors, if any. Any use, copying, publication, distribution, display, modification, or transmission of such publication in whole or in part in any form or by any means without the prior express written permission of Flexera is strictly prohibited. Except where expressly provided by Flexera in writing, possession of this publication shall not be construed to confer any license or rights under any Flexera intellectual property rights, whether by estoppel, implication, or otherwise.

All copies of the technology and related information, if allowed by Flexera, must display this notice of copyright and ownership in full.

## Intellectual Property

For a list of trademarks and patents that are owned by Flexera, see <https://www.flexera.com/legal/intellectual-property.html>. All other brand and product names mentioned in Flexera products, product documentation, and marketing materials are the trademarks and registered trademarks of their respective owners.

## Restricted Rights Legend

The Software is commercial computer software. If the user or licensee of the Software is an agency, department, or other entity of the United States Government, the use, duplication, reproduction, release, modification, disclosure, or transfer of the Software, or any related documentation of any kind, including technical data and manuals, is restricted by a license agreement or by the terms of this Agreement in accordance with Federal Acquisition Regulation 12.212 for civilian purposes and Defense Federal Acquisition Regulation Supplement 227.7202 for military purposes. The Software was developed fully at private expense. All other use is prohibited.