



Flexera Product Download and License Guide for AdminStudio 2021 R2 and Later

Legal Information

Book Name:	Flexera Product Download and License Guide for AdminStudio 2021 R2 and Later
Part Number:	ADS-2021R2-LG00
Product Release Date:	October 2021

Copyright Notice

Copyright © 2021 Flexera

This publication contains proprietary and confidential information and creative works owned by Flexera and its licensors, if any. Any use, copying, publication, distribution, display, modification, or transmission of such publication in whole or in part in any form or by any means without the prior express written permission of Flexera is strictly prohibited. Except where expressly provided by Flexera in writing, possession of this publication shall not be construed to confer any license or rights under any Flexera intellectual property rights, whether by estoppel, implication, or otherwise.

All copies of the technology and related information, if allowed by Flexera, must display this notice of copyright and ownership in full.

Intellectual Property

For a list of trademarks and patents that are owned by Flexera, see <https://www.flexera.com/legal/intellectual-property.html>. All other brand and product names mentioned in Flexera products, product documentation, and marketing materials are the trademarks and registered trademarks of their respective owners.

Restricted Rights Legend

The Software is commercial computer software. If the user or licensee of the Software is an agency, department, or other entity of the United States Government, the use, duplication, reproduction, release, modification, disclosure, or transfer of the Software, or any related documentation of any kind, including technical data and manuals, is restricted by a license agreement or by the terms of this Agreement in accordance with Federal Acquisition Regulation 12.212 for civilian purposes and Defense Federal Acquisition Regulation Supplement 227.7202 for military purposes. The Software was developed fully at private expense. All other use is prohibited.

Contents

Downloads and Licensing for AdminStudio 2021 R2 and Later	5
Licensing Options	6
Downloading AdminStudio, Add-Ons, Service Packs, and Other Installations	7
Licensing Overview for AdminStudio	8
Activating AdminStudio for Node-Locked Licenses	9
Setting up License Files for Self-Hosted Licenses of AdminStudio	9
Setting Up a License Server with Self-Hosted Licenses of AdminStudio	11
Setting Up the Concurrent Licensing Environment for AdminStudio	13
Background Information about Concurrent Licensing	13
Setting Up the Concurrent License Server	15
System Requirements for the FlexNet Licensing Server	15
Obtaining the FlexNet Licensing Server Software	16
Setting Up the FlexNet Licensing Server Software on the Licensing Server, Obtaining an Activation Code, and Activating	16
Moving Licenses to a Different License Server	24
Connecting a User's Machine to the License Server for AdminStudio License Check-Outs and Check-Ins	24
Borrowing AdminStudio Licenses from the License Server	25
Using the License Server Manager (lmadmin) on a FlexNet Licensing Server for Concurrent Licenses	26
Launching lmadmin	27
Importing a License File into lmadmin	28
Administering a Vendor Daemon	29
Viewing System Information about the FlexNet Licensing Server	31

Downloads and Licensing for AdminStudio 2021 R2 and Later

This document contains background information on the different licensing models that are available for AdminStudio 2021 R2 and later. This document also contains instructions for various tasks:

- Obtaining installations of AdminStudio 2021 R2 and later, stand-alone tools, and more
- Setting up licensing for AdminStudio 2021 R2 and later



Note • If you are using an earlier version of AdminStudio, refer to the appropriate instructions that are posted at the following site: [Accessing Your Flexera Products](#).

This document includes the following topics:

- [Licensing Options](#)
- [Downloading AdminStudio, Add-Ons, Service Packs, and Other Installations](#)
- [Licensing Overview for AdminStudio](#)
- [Activating AdminStudio for Node-Locked Licenses](#)
- [Setting up License Files for Self-Hosted Licenses of AdminStudio](#)
- [Setting Up a License Server with Self-Hosted Licenses of AdminStudio](#)
- [Setting Up the Concurrent Licensing Environment for AdminStudio](#)
- [Using the License Server Manager \(lmadmin\) on a FlexNet Licensing Server for Concurrent Licenses](#)

Licensing Options

AdminStudio 2021 R2 and later offers subscription licensing with two different types of licensing:

- **Node-locked subscription licensing**—With this model, the product license is tied to a specific user and machine for the subscription duration entitled. This model is the traditional option and the one that is most often purchased.

Node-locked licensing has two types of activations:

- **Activation code based**—This type requires a product activation code to activate the product.
- **License file based (referred to as Self-Hosted)**—Self-hosted is used when AdminStudio is used in a locked-down environment with no access to the Internet. A license file needs to be generated in the Flexera Product and License Center using the MAC address of the AdminStudio machine.

If you are using the node-locked type of license, it is your responsibility to maintain your license on your machine. Sharing this type of license between multiple users does not comply with Flexera products' end-user license agreements (EULAs).

- **Concurrent subscription licensing with License Server**—This model enables sharing or floating of AdminStudio licenses between multiple users for the subscription duration the concurrent license is entitled; it is also sometimes called floating licensing. Concurrent licensing can provide you with greater flexibility and cost efficiency than the traditional node-locked licensing. AdminStudio concurrent subscription licensing can be configured with the **FlexNet License Server**.

Concurrent licensing also has two types of activations:

- **Activation code based** (also referred to as Concurrent).
- **License file based** (referred as Self-Hosted with License Server).

If your organization purchased concurrent FlexNet License Server for AdminStudio, you need to identify the license server that you are using when you install AdminStudio on your machine. Subsequently, every time that you start AdminStudio on your machine, the server is queried to verify that the required license is available. If the license is available, you are granted access to AdminStudio. No product activation is required with concurrent licensing.



Important • AdminStudio concurrent licenses are available for Service Providers only.

To learn more about these different licensing models and determine which option best fits your requirements, contact your AdminStudio sales representative.

Downloading AdminStudio, Add-Ons, Service Packs, and Other Installations

The following installations are available for download from the Flexera Product and License Center, a Web site:

- AdminStudio
- Add-ons (if you are entitled to them) such as the Standalone Repackager and the Standalone QualityMonitor
- FlexNet Licensing server software (if you purchased concurrent licenses and you need to set up your organization's licensing server)
- AdminStudio service packs (if available)



Note • For information on accessing the Flexera Product and License Center site, see [Accessing the Flexera Product and License Center](#).



Task

To download any of the installations:

1. Sign in to the Flexera Product and License Center. For information on accessing this site, see [Accessing the Flexera Product and License Center](#).
2. In the left navigation, under **Entitlements**, click **Product List**.


The **Product List** page shows all of the product lines to which your account is entitled. If you do not have access to multiple products, clicking the **Product List** link opens the **Product Information** page directly.
3. If the **Product List** page shows multiple products, click the **AdminStudio** link. The **Product Information** page opens.
4. In the **Product and File Downloads** column, click the AdminStudio link for the version that you want to download. The **Product Download** page opens.
5. Click the appropriate download button.

Once you have downloaded an installation, run the downloaded installation on the machine on which you want to use the product.

Licensing Overview for AdminStudio

The following table explains how to set up the licensing for the type of license that you purchased.

Table 1 • License Types

License Type	Description of License Type	Instructions
Node-locked license of AdminStudio	This type is tied to a specific user and machine. A node-locked license requires a product activation code to activate the product. This model is the traditional option.	For instructions, see Activating AdminStudio for Node-Locked Licenses .
Self-hosted license of AdminStudio	This type is tied to a specific user and machine. A self-hosted license for AdminStudio requires a Flexera-generated license file for the machine on which you install AdminStudio.	To set up a self-hosted license, see Setting up License Files for Self-Hosted Licenses of AdminStudio .
Concurrent and Self-Hosted License Server License of AdminStudio	<p>For this type, the product on each user's machine must be connected to a licensing server that your organization sets up. This license type requires you to activate the licenses on the license server using an activation code, which is available through the Flexera Product and License Center.</p> <p>The license server software enables users to borrow a license for AdminStudio from the license server for a specific number of days. Using a borrowed license enables you to use the product while being disconnected from the same network as the license server.</p>  <p>Important • AdminStudio concurrent licenses are available for Service Providers only.</p>	<p>To set up a license server, see Setting Up the Concurrent Licensing Environment for AdminStudio.</p> <p>To connect a machine that has the product to the license server, see Connecting a User's Machine to the License Server for AdminStudio License Check-Outs and Check-Ins.</p> <p>To learn how to borrow a license of AdminStudio, see Borrowing AdminStudio Licenses from the License Server.</p> <p>To learn how to set up a license server with self-hosted licenses of AdminStudio, see Setting Up a License Server with Self-Hosted Licenses of AdminStudio.</p>

Activating AdminStudio for Node-Locked Licenses

The node-locked licensing model requires that you activate AdminStudio on your machine. Activation verifies that the product has not been activated on more machines than allowed by the AdminStudio EULA. If you are using the node-locked type of license, it is your responsibility to maintain your license on your machine.



Task

To activate AdminStudio:

Launch the product that you want to activate. The activation wizard opens. Use this wizard to enter your activation code and activate your product.

For more information about activating your product if you purchased a node-locked license of AdminStudio, see the “Activating AdminStudio” section of the AdminStudio Help Library that is installed with AdminStudio.

Setting up License Files for Self-Hosted Licenses of AdminStudio

Once you have purchased a self-hosted license of AdminStudio, obtained the AdminStudio installation, and installed the product, you can configure your self-hosted license. Configuring a self-hosted license of AdminStudio requires that you obtain a license file (.lic) from the Product and License Center. The following procedure explains how to obtain and configure the self-hosted license.



Task

To obtain and configure a self-hosted license file (.lic):

1. Launch AdminStudio. Before the product starts, the activation wizard opens.
2. Select the **Configure AdminStudio to get license information from a license file** option and then click the **Next** button.
3. On the **Specify License File** dialog, click the **Launch Product and License Center** link.

Clicking this link opens a Web page that has a link to the Product and License Center. Click that link and then sign in to the Product and License Center.



Tip • If you do not have an Internet connection on the machine on which you are configuring a self-hosted license of AdminStudio, sign in to the Product and License Center on a machine that does have an Internet connection.

4. In the Product and License Center, acquire the license file for the specific machine on which you are configuring AdminStudio.
 - a. In the left navigation, under **Entitlements**, click **Product List**.

The **Product List** page shows all of the product lines to which your account is entitled. If you do not have access to multiple products, clicking the **Product List** link opens the **Product Information** page directly.

- b. If the **Product List** page shows multiple products, click the **AdminStudio** link. The **Product Information** page opens.

- c. Click the **Licenses** link for the product that you are installing and configuring. The **License Information** page opens. This page shows details about the used and unused licenses of the product.
 - d. Find an unused license in the list and select the **License Applicable to Product(s)** option that pertains to that license.
 - e. At the bottom of the page, click the **Generate** button. The **Generate Licenses** page opens.
 - f. In the **Node Host ID** box for the license, enter the host ID that pertains to the specific machine on which you are configuring the licensing for AdminStudio. The host ID is displayed on the **Specify License File** dialog of the activation wizard.
 - g. Click the **Generate** button. The **View Licenses** page opens.
 - h. Click the **Save All** button. The Product and License Center displays a dialog box that lets you specify the location where you want to download the license file.
 - i. Specify a location that is accessible by the machine on which you are configuring AdminStudio. The Product and License Center downloads the .lic file or files to the location that you specified. The file is named *HostID.lic*, where *HostID* is the host ID that you specified when you obtained the .lic file. You can change the name of this file if it makes it easier to manage it.
5. Return to the **Specify License File** dialog in the activation wizard.
 6. In the **License File** box, enter the path for the .lic file that you want to use on the machine, or click the **Browse** button to navigate to the file. The path for the .lic file should be a location that is always accessible by the machine on which you are configuring AdminStudio.
 7. Complete the remaining dialogs in the activation wizard.

The activation wizard configures the licensing on machine.

Setting Up a License Server with Self-Hosted Licenses of AdminStudio

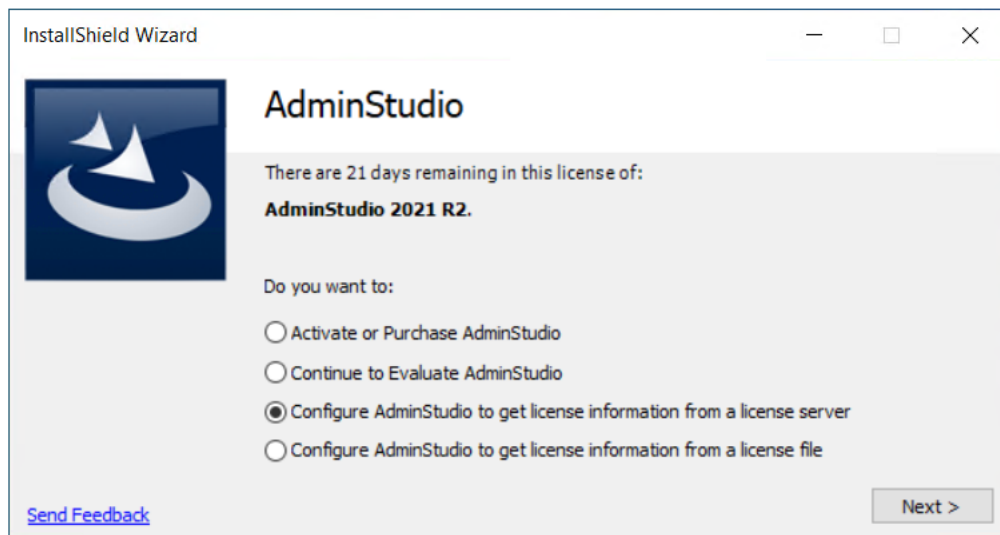
To set up a license server with self-hosted licensed of AdminStudio, perform the following steps.



Task

To set up a license server with self-hosted licenses of AdminStudio:

1. Launch AdminStudio. Before the product starts, the Activation Wizard opens.
2. Select the **Configure AdminStudio to get license information from a license file** option and then click the **Next** button.



The **Specify License Server** panel opens.

3. With the Activation Wizard still open on the **Specify License Server** panel, login to the Flexera Community and, on the **Product Access** menu, select **Product and License Center**. The **Product and License Center** opens.



Tip • If you do not have an Internet connection on the machine on which you are configuring the AdminStudio License Server, sign in to the Product and License Center on a machine that does have an Internet connection.

4. In the Product and License Center, acquire the license file for the specific machine on which you are configuring the AdminStudio License Server.
 - a. In the left navigation, under **Entitlements**, click **Product List**.

The **Product List** page shows all of the product lines to which your account is entitled. If you do not have access to multiple products, clicking the **Product List** link opens the **Product Information** page directly.
 - b. If the **Product List** page shows multiple products, click the **AdminStudio** link. The **Product Information** page opens.
 - c. Click the **Licenses** link for the product that you are installing and configuring. The **License Information** page opens. This page shows details about the used and unused licenses of the product.

- d. Find an unused license in the list and select the **License Applicable to Product(s)** option that pertains to that license.
 - e. At the bottom of the page, click the **Generate** button. The **Generate Licenses** page opens.
 - f. In the **Number of Licenses to Generate** box for the license, enter the number of AdminStudio machines which you need to activate using the License Server.
 - g. In the **Node Server Host ID** box for the license, enter the host ID that pertains to the specific machine on which you are configuring the License Server for AdminStudio.
 - h. Click the **Generate** button. The **View Licenses** page opens.
 - i. Click the **Save All** button. The Product and License Center displays a dialog box that lets you specify the location where you want to download the license file.
 - j. Specify a location that is accessible by the machine on which you are configuring the License Server. The Product and License Center downloads the .lic file or files to the location that you specified. The file is named HostID.lic, where HostID is the host ID that you specified when you obtained the .lic file. You can change the name of this file if it makes it easier to manage it.
 - k. On the License Server configured machine, browse to the above saved file on the License Server and follow the steps in [Using the License Server Manager \(lmadmin\) on a FlexNet Licensing Server for Concurrent Licenses](#).
5. Return to the **Specify License Server** panel in the Activation Wizard.

InstallShield Wizard

Specify License Server

If you purchased concurrent licenses for AdminStudio 2021 R2, specify the FlexNet Licensing server name. If the server is not configured to use the default port, you must also specify the server port number.

Once it is configured, you can test the connection by clicking the link below.

Server: Port:

[Test Connection](#)

6. In the **Server** box, enter the License Server details that you want to use on the machine, or click the **Browse** button to browse to the License Server machine and enter the Port number.
7. Complete the remaining panels of the Activation Wizard. The Activation Wizard configures the licensing on the machine.

Setting Up the Concurrent Licensing Environment for AdminStudio



Important • AdminStudio concurrent licenses are available for Service Providers only.

If your organization has purchased concurrent licenses of AdminStudio, a FlexNet Licensing Server that you set up in your environment manages how many instances of the product can be run simultaneously. Each user who wants to launch the product needs to establish a connection with the licensing server to check out and check in licenses when needed.

Background Information about Concurrent Licensing

The following process describes what occurs each time that a user in your organization starts the product that is using concurrent licensing.

1. A user launches the product.
2. The FlexEnabled code on the user's machine establishes a connection with the FlexNet Licensing Server and requests a license.
3. The FlexNet Licensing Server checks whether a license is available. If a license is available, the FlexNet Licensing Server checks it out. In addition, the server sends a message to the user's machine. The message grants permission to run the product.
4. The FlexEnabled code on the user's machine receives the message and opens the product.

When the user exits the product, the FlexEnabled code on the user's machine sends a message to the FlexNet Licensing Server, and the license is checked back in, making it available for another machine.



Tip • If the user needs to be disconnected from the same network as the FlexNet Licensing Server, the user can borrow the license of the product for a specified number of days. Once the borrowed license has expired, the product cannot be launched on the user's machine until another license is checked out on that machine.

For more information, see [Borrowing AdminStudio Licenses from the License Server](#).

Components of a FlexNet Licensing Server

A FlexNet Licensing Server consists of the following components.

Table 2 • FlexNet Licensing Server Components

Component	Description
FlexEnabled Product	A FlexEnabled product is one that uses FlexNet Publisher Licensing Toolkit to implement its license models. InstallShield, AdminStudio, and InstallAnywhere are all FlexEnabled products. These FlexEnabled products communicate with the FlexNet Licensing Server to request a license when needed.
License Server Manager	<p>The license server manager on the FlexNet Licensing Server handles the initial contact with the FlexEnabled product, passing the connection on to the vendor daemon. The license server manager starts and maintains vendor daemons for serving license rights.</p> <p>One version of the license server manager is available: lmadmin. This is the latest version of the license server manager. This version has a graphical user interface.</p>
Vendor Daemon	<p>A vendor daemon is a file that is associated with the vendor who developed the FlexEnabled product. If you are using a FlexNet Licensing Server to manage licenses for InstallShield, AdminStudio, or InstallAnywhere, as well as for products that are developed by other companies and are also FlexEnabled, your FlexNet Licensing Server will have one vendor daemon for Flexera, and one additional vendor daemon for each additional vendor.</p> <p>The vendor daemon handles the communication between the FlexEnabled product and the FlexNet Licensing Server; it also keeps track of how many licenses are checked out, how many are borrowed and when each expires, and who has the checked-out and borrowed licenses.</p>

Note the following about the FlexNet Licensing Server components:

- **Communication via TCP/IP**—InstallShield, AdminStudio, and InstallAnywhere communicate with the vendor daemon through TCP/IP network communications. The products and the daemon processes can run on separate machines on your network, across any size wide-area network.
- **Machine-independent communication**—The format of the traffic between the Flexera product and the FlexNet Licensing Server is machine independent, allowing for heterogeneous networks. This means that the FlexNet Licensing Server machine and the machine that is running the Flexera product can be different hardware platforms.
- **Vendor daemon termination scenario**—If the vendor daemon terminates for any reason, all users lose their licenses (though this does not mean that the applications suddenly stop running). Users normally regain their license automatically when the license server manager restarts the vendor daemon; however, they may exit the product if the vendor daemon remains unavailable.

Setting Up the Concurrent License Server



Important • AdminStudio concurrent licenses are available for Service Providers only.

If you are setting up your concurrent licensing environment to manage concurrent licenses of AdminStudio, you will need to download the FlexNet Licensing Server software, install the software, and obtain the activation code. This section explains how, and also explains system requirements for the server:

- [System Requirements for the FlexNet Licensing Server](#)
- [Obtaining the FlexNet Licensing Server Software](#)
- [Setting Up the FlexNet Licensing Server Software on the Licensing Server, Obtaining an Activation Code, and Activating](#)



Tip • For instructions on how to connect a machine that has AdminStudio to the license server, see [Connecting a User's Machine to the License Server for AdminStudio License Check-Outs and Check-Ins](#).

System Requirements for the FlexNet Licensing Server

When you are determining which machine to use as the FlexNet Licensing Server, note the following:

- **Machine selection**—The FlexNet Licensing Server machine can be any machine in your network. Typically, the licensing server system components reside on a central machine in the network.

The FlexNet Licensing Server machine can have other applications running on it; it does not need to be dedicated to running only the FlexNet Licensing Server. However, for a high-traffic, high-license-count environment, and a more reliable system, it is better to have a dedicated machine.

The FlexNet Licensing Server machine should remain on at all times so that users can access it at all times.

Triad server clusters are not supported.
- **Supported operating systems**—The FlexNet Licensing Server machine must be a Windows-based machine. The following versions of Windows are supported: Windows 7, Windows Server 2008 R2, Windows Server 2012 R2, Windows 8, Windows 8.1, and Windows 10.



Note • Note that although the FlexNet Licensing Server has support for other operating systems, concurrent licensing for AdminStudio and its add-ons requires one of the aforementioned specific versions of Windows.

- **Networking**—The FlexNet Licensing Server machine must be able to communicate with the Flexera product through a TCP/IP port. A valid number is any unused port number between 0 and 64000. The default port range is 27000 through 27009. You may need to adjust your firewall settings to allow this communication.

- **Required software**—The license server manager that is installed as part of the FlexNet Licensing Server installation is lmadmin, the Web-based application. lmgrd, the command-line tool, is not supported.

Earlier versions of the FlexNet Licensing Server software must be uninstalled before the new version (the one that is available for AdminStudio 2021 R2) can be installed.

lmadmin can be used in the following Web browsers: Microsoft Internet Explorer 11 and Microsoft Edge.

Obtaining the FlexNet Licensing Server Software

The FlexNet Licensing Server software manages license check-out and check-in requests from users who have concurrent licenses. The installation for the FlexNet Licensing Server consists of a single, compressed executable file that installs the concurrent licensing software. You can run this installation on the machine that you are designating as your licensing machine. The installation is needed only if you have purchased concurrent licenses of AdminStudio.

The FlexNet Licensing Server installation is for Windows-based systems, and it is available for download from the Product and License Center, along with the AdminStudio installation, service packs, and other downloads. For instructions on how to obtain the download, see [Downloading AdminStudio, Add-Ons, Service Packs, and Other Installations](#).

Setting Up the FlexNet Licensing Server Software on the Licensing Server, Obtaining an Activation Code, and Activating

Once you have obtained the FlexNet Licensing Server software, you can install this software on the machine that you want to use as your licensing server. Configuring a FlexNet Licensing Server for managing concurrent licenses of AdminStudio requires that you obtain an activation code from the Product and License Center.

The FlexNet Licensing Server software includes a license server manager (lmadmin). The license server manager has a local Web-based user interface that lets you perform tasks such as the following ones:

- Perform server configuration and most administration functions.
- Add or remove users, and configure their privileges.

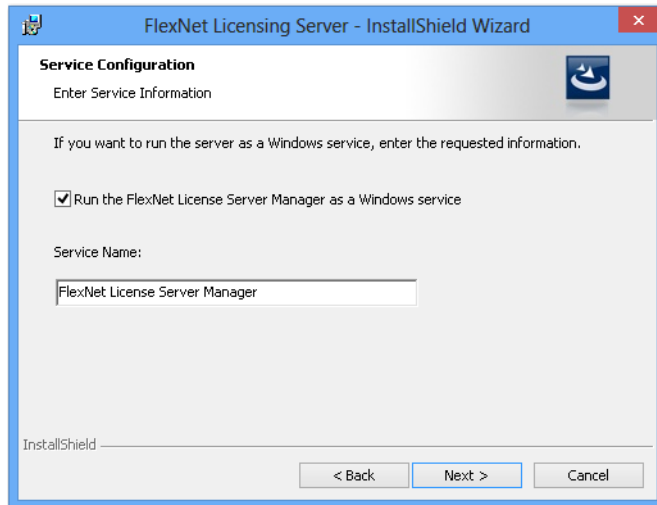
The following instructions explain how to install and configure the FlexNet Licensing Server software for concurrent licenses.



Task

To install the FlexNet Licensing Server and obtain an activation code:

1. Launch the FlexNet Licensing Server installation and advance to the **Service Configuration** dialog.



2. If you want to run the FlexNet Licensing Server as a Windows service, select the check box, and enter the name that you would like to use for the service.

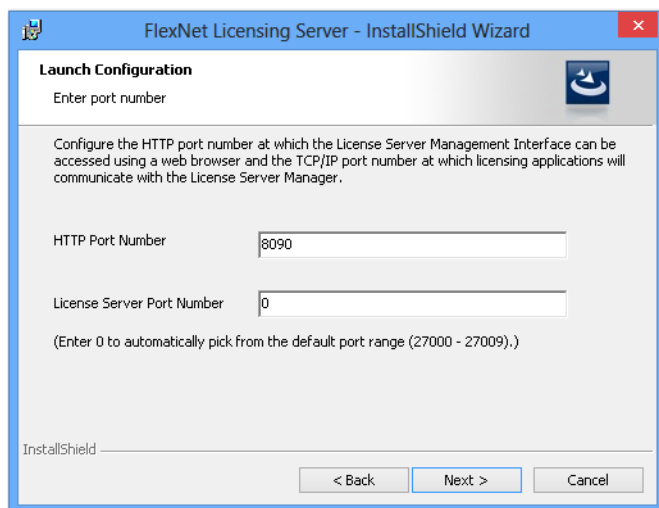


Important • To achieve the highest level of availability, it is recommended that you choose to run the FlexNet License Server Manager as a Windows service. If it is run as a Windows service and the FlexNet Licensing Server machine needs to be restarted, the service is also restarted. Therefore, no manual intervention is needed to make the FlexNet Licensing Server available again to users or machines who try to check out licenses.

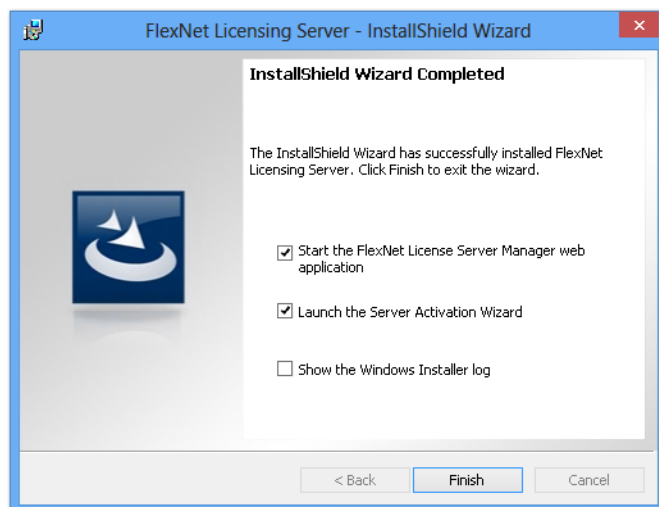
3. On the **Launch Configuration** dialog, enter the appropriate port numbers in the **HTTP Port Number** box and the **License Server Port Number** box.

The HTTP port number is used to host a Web server for monitoring which licenses are in use and which machines are using them.

The license server port number is used for communication between the vendor daemon on the FlexNet Licensing Server and FlexNet Enabled products (such as AdminStudio).

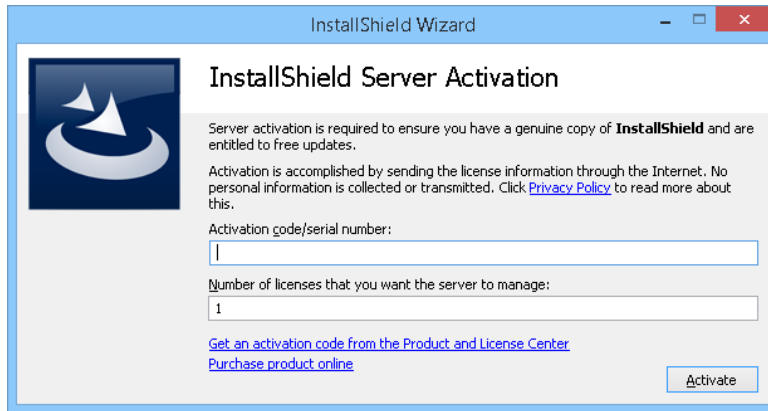


4. Complete the remaining dialogs in the installation. The last dialog has several check boxes.



5. Select the **Launch the Server Activation Wizard** check box, optionally select the **Start the FlexNet License Server Manager web application** check box, and then click the **Finish** button.

The **Server Activation Wizard** opens.



Tip • To access the Server Activation Wizard at a later time, click the FlexNet Server Activation Wizard shortcut on the Start menu.

6. If you do not have your activation code (which is in the format XXXX-XXXX-XXXX-XXXX—that is, four sets of four characters), you can acquire it for the specific machine on which you installed the FlexNet Licensing Server:

- a. Click the **Get an activation code from the Product and License Center** link.

Clicking this link opens the Product and License Center, a Web site. Sign in to the Product and License Center.



Tip • If you do not have an Internet connection on the machine on which you are installing the FlexNet Licensing Server software, sign in to the Product and License Center on a machine that does have an Internet connection.

- b. In the left navigation, under **Entitlements**, click **Product List**.

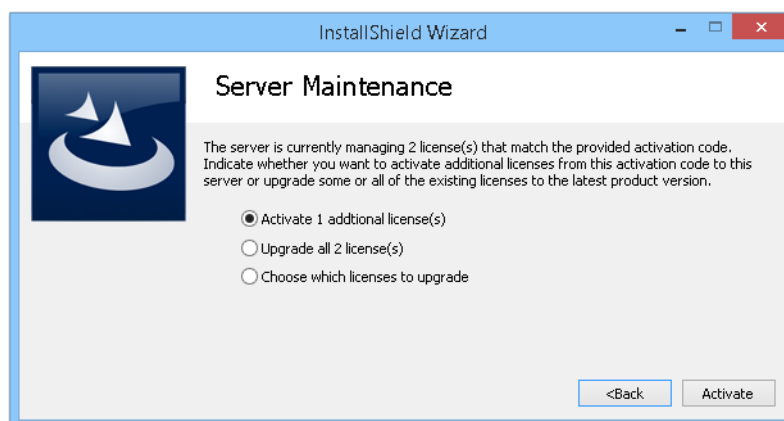
The **Product List** page shows all of the product lines to which your account is entitled. If you do not have access to multiple products, clicking the **Product List** link opens the **Product Information** page directly.

- c. If the **Product List** page shows multiple products, click the **AdminStudio** link. The **Product Information** page opens.
- d. Click the **Licenses** link for the product that you are installing and configuring. The **License Information** page opens. This page shows details about licenses for the product.
- e. To obtain the information that you need when activating your licenses: Find your activation code on the page and ensure that it has at least one license available. Note the number of available licenses for that activation code, as well as the activation code. Use the activation code when activating the licenses on the license server.

7. Return to the **Server Activation Wizard** and enter the following information:
 - a. In the **Activation code** box, enter the activation code for activating the product. The activation code is in the format XXXX-XXXX-XXXX-XXXX (four sets of four characters).
 - b. In the **Number of licenses that you want the server to manage** box, enter the appropriate number of licenses. The maximum number that you can enter is the available number of licenses that was specified in the Product and License Center.
8. Click the **Activate** button. One of the following results occurs:
 - a. The wizard transmits the activation request to the Product and License Center. When the Product and License Center receives your activation request, it validates the request. If the request is valid, the Product and License Center automatically transmits the activation response to the Server Activation Wizard, which activates the licenses on the server.
 - b. If the licensing server does not have an Internet connection or if you are having problems completing the activation process, the Server Activation Wizard gives you the option of performing offline activation. For more information, see [Performing Offline Activation](#).
 - c. If the server is already managing concurrent licenses for the activation code that you entered, the Server Activation Wizard enables you to specify whether you want to activate additional licenses on the server or upgrade one or more of the existing licenses that the server is currently managing.

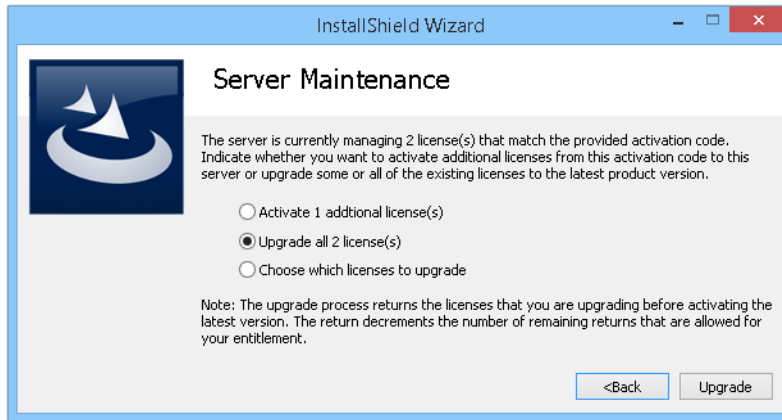
If the server is already managing concurrent licenses, the wizard displays the Server Maintenance wizard page. Do one of the following:

- If you want to activate additional licenses on the server, select the **Activate X additional license(s)** option, and then click the **Activate** button.



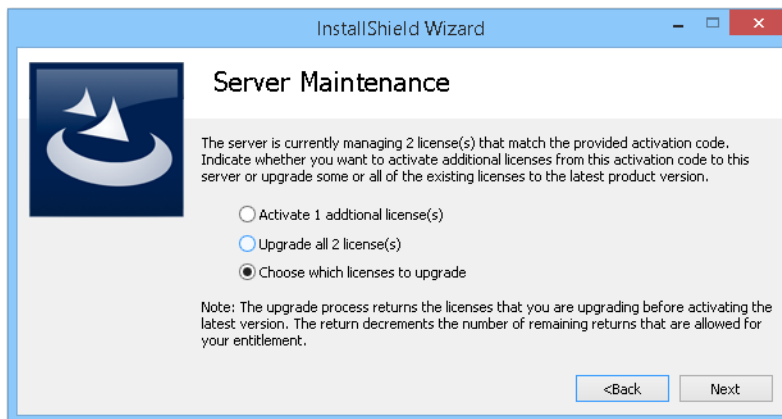
The wizard transmits the activation request to the Product and License Center.

- If you want to upgrade the number of licenses that you specified on the previous wizard page, select the **Upgrade all X license(s)** option, and then click the **Upgrade** button.

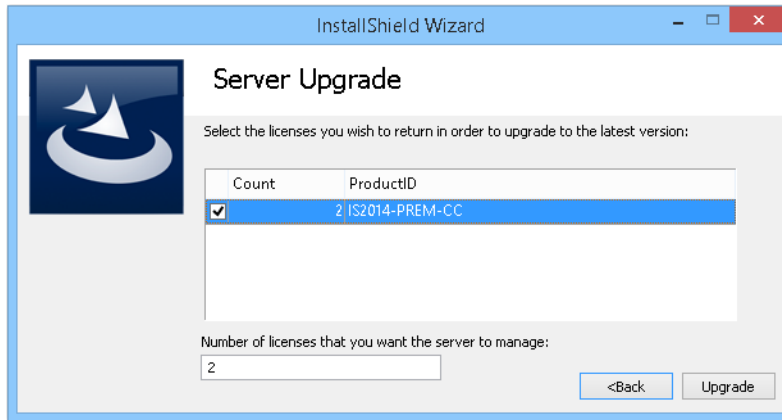


The wizard transmits the activation request to the Product and License Center. Note that the upgrade process returns the licenses that you are upgrading before activating the latest version. The return decrements the number of remaining returns that are allowed for your entitlement.

- If you want to upgrade only certain licenses, select the **Choose which licenses to upgrade** option, and then click the **Next** button.



The **Server Upgrade** wizard page opens. Select the check box that corresponds with the licenses that you want to upgrade, enter the number of licenses that you want to use, and then click the **Upgrade** button.



The wizard transmits the activation request to the Product and License Center. Note that the upgrade process returns the licenses that you are upgrading before activating the latest version. The return decrements the number of remaining returns that are allowed for your entitlement.

Checking the FlexNet Licensing Server After Installation

To test to see if the server is running, open a Web browser on the machine on which you ran the installation and go to the following URL (but substitute the appropriate port number in place of *PortNumber*):

http://localhost:PortNumber/

You can also visit this portal from another machine by going to the following URL. Note that your machine's firewall settings may need to be modified in order to access this site.

http://MachineName:PortNumber/

MachineName is the name of the machine that has the FlexNet Licensing Server software. *PortNumber* is the port number that you entered in the installation; 8090 is the default port number.



Important • In many organizations, the person who sets up the FlexNet Licensing Server to manage concurrent licenses is not the same person who installs and uses AdminStudio or the related tools. If this is the case in your organization, ensure that you inform users about the following information, since they will need to know it when they install AdminStudio or other tool and connect to the FlexNet Licensing Server:

- Name or IP address of the server on which the FlexNet Licensing Server software was installed
- License server port number that you entered on the Launch Configuration dialog. (In most cases, this value is left blank. If you leave this blank, inform users of AdminStudio or other tool that they should leave the port number setting in the product installation blank.)

Performing Offline Activation

If the FlexNet Licensing Server machine does not have an Internet connection, you can perform offline activation through a self-service Web page (<http://www.installshield.com/offlineactivation>) on a different machine.



Task

To perform offline activation through email:

1. **Attempt to activate** the concurrent licenses on the server. If it cannot be completed, the Server Activation Wizard displays the **Offline Activation** dialog. The Request text box contains your request text. The request text starts with **<?xml version**, and it ends with **</Request>**.
2. To save the request text to a text file that you can upload from a machine with an Internet connection, click the **Save** button. The wizard lets you save the text as a .request file.
3. Visit the Offline Activation Web page (<http://www.installshield.com/offlineactivation>)—a part of the Flexera Product and License Center—and follow the instructions to browse to the .request file that you saved.

When you click the button on the Offline Activation Web page to submit the activation request and obtain the activation response file (.xml), the Web page prompts you for a place to save the .xml file. Save it and make it available on the machine on which you initiated the activation process.

4. When you have the activation response file (.xml) and you are ready to complete the activation process, launch FlexNet Server Activation Wizard shortcut on the Start menu. The Server Activation Wizard opens.
5. Proceed to the **Offline Activation** dialog, which has a **Response text** box.
6. Click the **Load** button. The Open dialog opens.
7. Browse to the activation response file (.xml), and then click the **Open** button. The Open dialog closes, and the wizard writes the response text in the **Response text** box. The response text starts with **<?xml version**, and it ends with **</Response>**.



Note • As an alternative for step 7, you can copy the response text to your Clipboard and then use the Paste button to paste the Clipboard contents into the **Response text** box.

8. Click the **Activate** button.

The Server Activation Wizard activates the server licenses.



Tip • The aforementioned procedure is also used to perform an offline return of a license.

Moving Licenses to a Different License Server

If you obtain a new replacement license server, you can move your licenses from your old machine to your new machine.

In order to move your licenses to your new machine, you must first return your licenses to your account in the Flexera Product and License Center. Returning the licenses make them available again so that you can activate them on a different server.

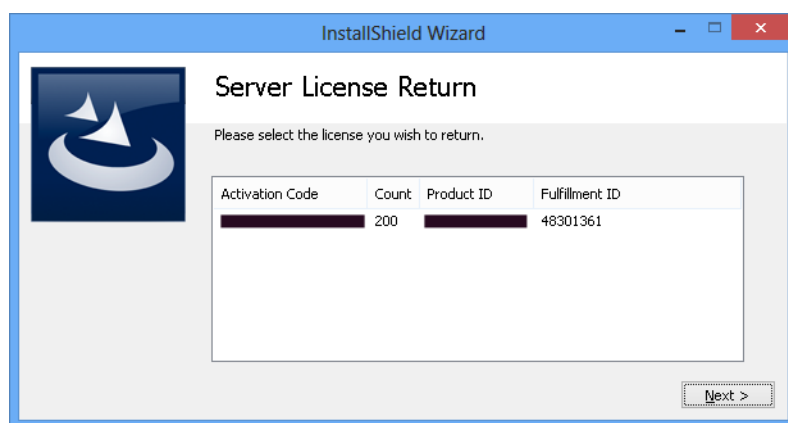


Important • Note that there is a limit to the number of times that you can return the licenses for activation on another machine. The maximum number of times is twice per year.



Task **To return the licenses to your account in the Product and License Center:**

1. On the Start menu, click the **FlexNet Server License Return** shortcut. The **Server License Return Wizard** opens.



2. Select the activation code that corresponds with the licenses that you want to return, and then click the **Next** button.

If the maximum number of times that the licenses can be returned has not been reached, the licenses are returned.

Connecting a User's Machine to the License Server for AdminStudio License Check-Outs and Check-Ins

If your organization purchased self-hosted licenses for AdminStudio, your organization must first set up the FlexNet Licensing Server. Once that has been done, you need to identify the FlexNet Licensing Server that you are using on the machine where you install AdminStudio.



Task **To identify the FlexNet Licensing Server for AdminStudio:**

1. Launch AdminStudio. Before the product starts, the activation wizard opens.
2. Select the **Configure the product to get license information from a license server** option and then click the **Next** button. The product displays the **Specify License Server** dialog.

3. In the **Server** box, enter the name or IP address of the license server, or click the **Browse** button to navigate to the server.
4. If the FlexNet Licensing Server that was configured in your environment uses a custom port number, enter the port number in the **Port** box. In most cases, the port number is left blank.
5. Click the **Test Connection** hyperlink.

The wizard connects your machine with the license server to verify whether your machine can check out and check in a license for the product.

Borrowing AdminStudio Licenses from the License Server

If you need to be disconnected from the same network as the FlexNet Licensing Server, you can (while you are connected to the same network) borrow the license of AdminStudio for a specified number of days. Once you have borrowed the license, you can use the product while being disconnected from the network.

Once the borrowed license has expired, the product stops working until you are connected to the same network as the license server and a license is available for check-out.

Note that the FlexNet Licensing Server software that ships with AdminStudio 2021 R2 and later can manage concurrent licenses for earlier versions of AdminStudio; however, AdminStudio 2013 was the first version of AdminStudio that had support for borrowing. Thus, you can borrow licenses for AdminStudio 2013 and later versions.

Borrowing a License

To borrow a license, perform the following steps.



Task

To borrow a license:

1. While being connected to the same network as the FlexNet Licensing Server, launch AdminStudio.
2. On the **Help** menu, click **About AdminStudio**. The **About AdminStudio** dialog box opens.
3. Click the **Borrow License** button. The **Borrow a License Wizard** opens.

InstallShield Wizard

Borrow a License

To borrow a concurrent license for AdminStudio 2013 from Flexera Software, specify the path to the FlexNet license server and duration you would like the license. If the server is not configured to use the default port, you must also specify the server port number.

Once it is configured, you can test the connection by clicking the link below.

Server: Port:

Borrow Duration (days):

[Test Connection](#)

4. Specify the name of the server, the license server port number, and the number of days that you want to borrow the license. The maximum number of days is 60. Then click the **Next** button.

The license is borrowed locally so that you can use the product for the specified number of days without being connected to the same network as the license server.

Returning a License

If you want to return the license to your FlexNet Licensing Server before the license expires, you can do so.



Task

To return a license before it has expired:

1. While being connected to the same network as the FlexNet Licensing Server, launch AdminStudio.
2. On the **Help** menu, click **About AdminStudio**. The **About AdminStudio** dialog box opens.
3. Click the **Return License** button.

The license is returned to your FlexNet Licensing Server, where it is made available for you or another user to check out.

Using the License Server Manager (lmadmin) on a FlexNet Licensing Server for Concurrent Licenses

The FlexNet Licensing Server software includes a license server manager (lmadmin). The license server manager has a local Web-based user interface that lets you perform tasks such as the following ones:

- Perform all server configuration and most administration functions.
- Add or remove users, and configure their privileges.

For detailed information on how to use lmadmin, see the documentation that is displayed when you click the Help button in the upper-right corner of this site.

Launching lmadmin

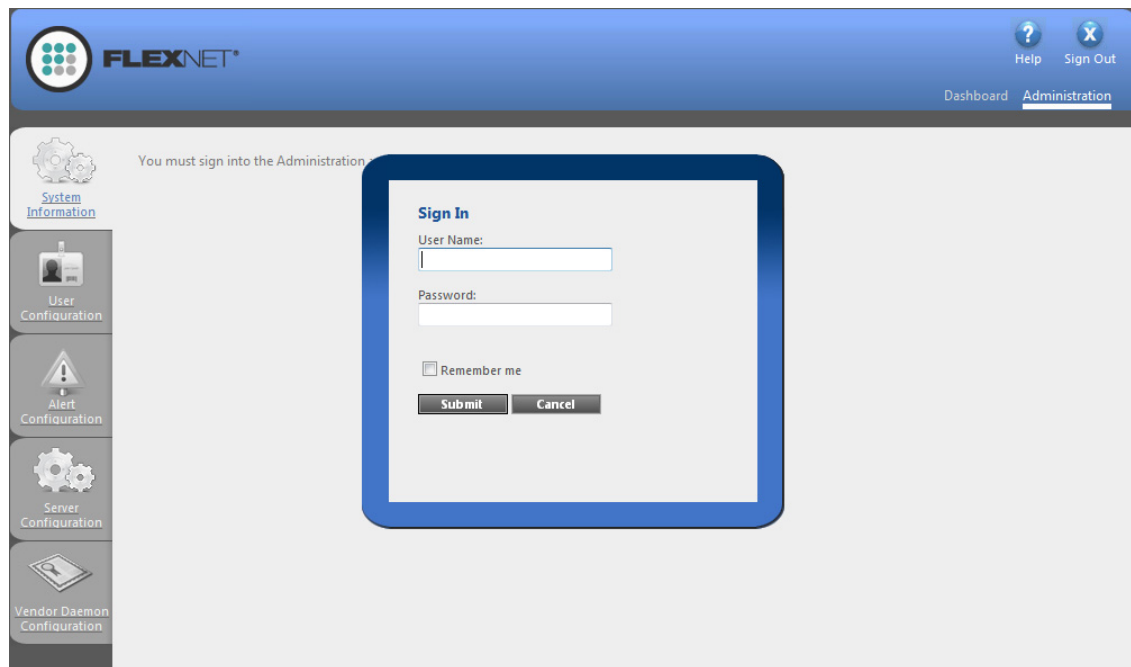
You can launch lmadmin and sign in to it regardless of whether you are using the machine that has the FlexNet Licensing Server or a different machine in your organization.



Task

To launch lmadmin:

1. Open a Web browser and do one of the following:
 - If you are using the machine that has the FlexNet Licensing Server, visit the following site:
`http://localhost:Port`
Port is the HTTP port number that is used to host the Web server; this is configured when the FlexNet Licensing Server software is installed. The default port number is 8090.
 - If you are using a different machine (one that is not your FlexNet Licensing Server), visit the following site:
`http://MachineName:Port`
MachineName represents the name of the machine that has the FlexNet Licensing Server software. *Port* is the HTTP port number that is used to host the Web server; this is configured when the FlexNet Licensing Server software is installed. The default port number is 8090.
2. In the upper-right corner of the site, click the **Administration** link. The site displays the **Sign In** page.



3. Sign in. The default sign-in information is as follows. If this is the first time that you are signing in with these credentials, lmadmin prompts you to change the password.
 - User Name: admin
 - Password: admin



Tip • If the FlexNet Licensing Server is configured to run as a service, you can start the FlexNet Licensing Server service by using the Windows Services administrative tool. If the FlexNet Licensing Server is not configured to run as a service, you can start it by running `lmadmin.exe`. The FlexNet Licensing Server must be started in order to allow users to check out and check in licenses.

Importing a License File into lmadmin

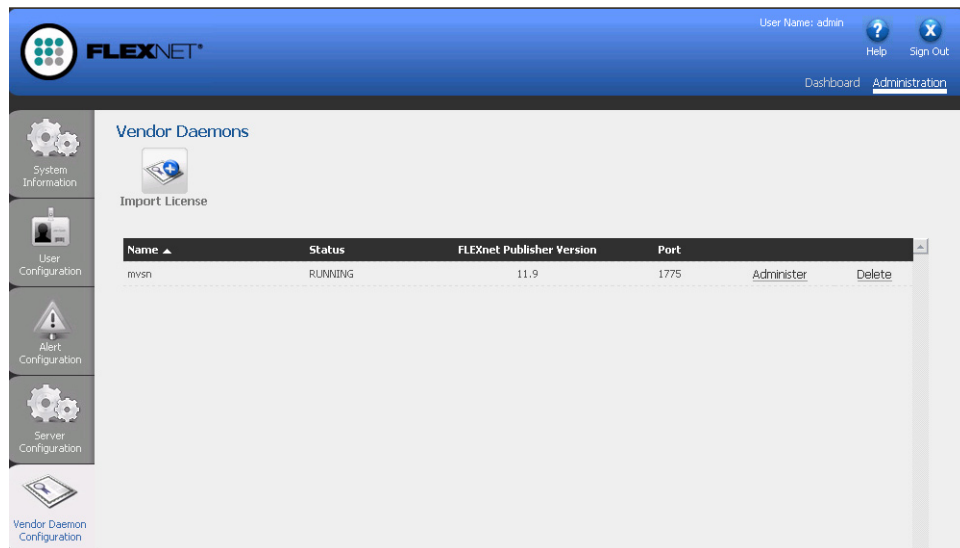
The Vendor Daemon Configuration page in lmadmin enables you to import license files for a vendor daemon. You may need to do this if you are using a FlexEnabled product that was distributed by a company other than Flexera, and that FlexEnabled product uses licenses files.



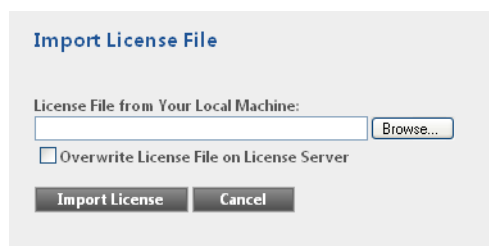
Task

To import a license file for an existing vendor daemon:

1. Click the **Administration** link, and then click the **Vendor Daemon Configuration** tab.



2. Click the **Import License** button. The **Import License File** page opens.



3. Specify the path to the license file (.lic) that you want to use, or click the **Browse** button to navigate to it.
4. Optionally, select the **Overwrite License File on License Server** check box. If a license file exists in the upload directory on the licensing server with the same name, the licensing server will overwrite that file. This option should not be required when you are adding a new vendor daemon to the license server manager.

5. Click the **Import License** button. If this is a license file for an existing vendor, the license server manager copies the file to the appropriate directory on the licensing server.
6. If you are importing a license file for an existing vendor and you cleared the **Overwrite License File on License Server** check box, you must stop and start the vendor daemon. The new license file is read, and the licenses it contains are loaded when the vendor daemon is started.

If you imported a license file for an existing vendor and you selected the Overwrite License File on License Server check box, the updated license file is reread automatically by the vendor daemon; users can begin using any new licenses once this reread has completed. The new licenses are also displayed on the Dashboard.

If you imported a license file for a new vendor, the license server manager adds the vendor daemon information to the license server configuration file so that the licensing server can manage it. The license server manager copies the file to the appropriate directory on the licensing server.

Administering a Vendor Daemon

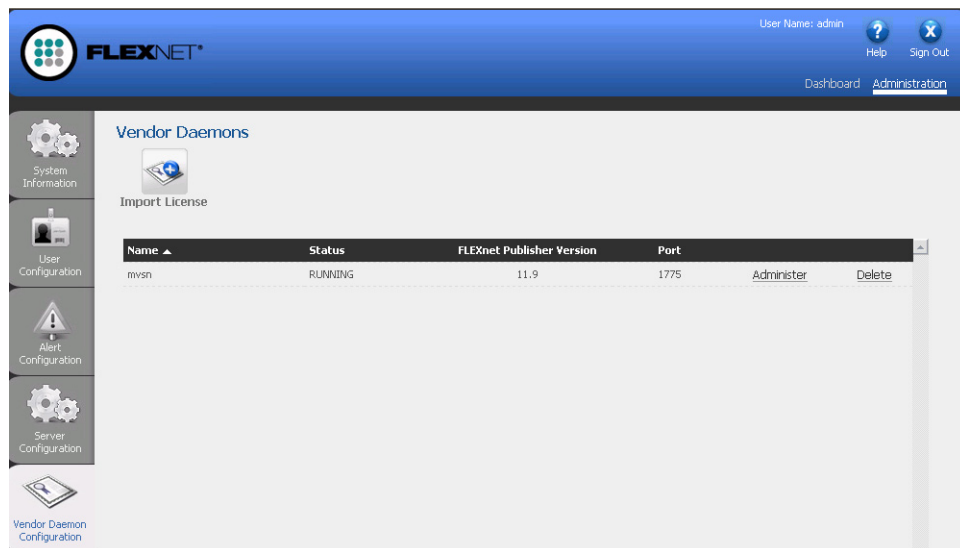
The Vendor Daemon Configuration page in lmadmin enables you to stop a vendor daemon, start a vendor daemon, and reread a license file for a vendor daemon.



Task

To administer a vendor daemon:

1. Click the **Administration** link, and then click the **Vendor Daemon Configuration** tab.



2. In the vendor daemon summary grid, click the **Administer** hyperlink. Several settings are displayed.

The screenshot shows the 'Vendor Daemon: mvsn' configuration window. At the top, it displays 'Vendor Daemon Port in Use: 1775'. Below this, there are buttons for 'Stop' and 'Reread License Files'. A text field for 'Report Log Name' is followed by a 'Rotate Report Logs' button. The 'General Configuration' section contains a 'License File or Directory' field with the path 'C:\Documents and Settings\DebbieLanders\My Documents\LicenseFiles\0004232c4c1f.lic'. Below this is the 'Vendor Daemon Location' field with the value 'mvsn/mvsn'. The 'Vendor Daemon Port' section has two radio buttons: 'Use default port' (selected) and 'Use this port' (with a value of 0). The 'Restart Retries' field is set to 3. There is an unchecked checkbox for 'Enable Date-based Versions'. At the bottom, there is a 'Vendor Daemon Log' section and 'Save' and 'Cancel' buttons.

3. Use the following settings to perform the required tasks.

- **Vendor Daemon Port in Use**—This read-only setting displays the TCP/IP port number that the vendor daemon uses for communication with FlexEnabled applications.
- **Stop**—This button stops the vendor daemon but leaves lmadmin running. When you stop a vendor daemon, this button changes to Start.
- **Start**—This button starts the vendor daemon. This button is displayed only if the vendor daemon is stopped. When you start the vendor daemon, the vendor daemon reads the license files to load the license rights into memory. When you start a vendor daemon, this button changes to Stop.
- **Reread License Files**—This button rereads the contents of the license files, trusted storage, and any vendor daemon options file and then loads the information into memory. The license files that are specified in the License File or Directory setting in the General Configuration section are reread, unless the value of the License File or Directory setting has been changed when a restart of the vendor daemon is required. Typically this button is used when the content of the license file or options file has been edited.
- **Report Log Name**—Enter the name of the file in which to save the current report log.
- **Rotate Report Logs**—When you click this button, the FlexNet Licensing Server renames the existing report log to the name in the Report Log Name setting and creates a new empty report log file using the name in the options file. To use this capability, you must enable report logging using the options file.

Viewing System Information about the FlexNet Licensing Server

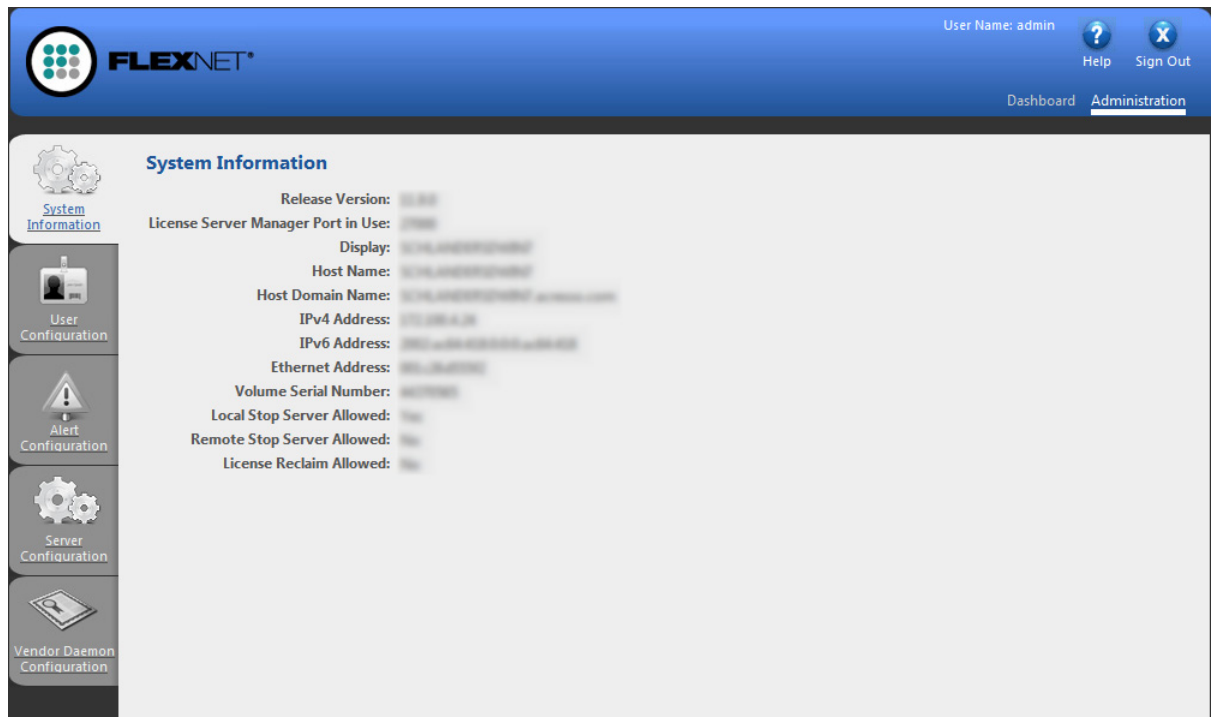
The license server manager (lmadmin) shows information about the FlexNet Licensing Server and the system that is running the FlexNet Licensing Server software.



Task

To view system information in lmadmin:

Click the **Administration** link, and then click the **System Information** tab.



The System Information tab shows the following information:

- **Release Version**—Release version of the FlexNet Licensing Server.
- **License Server Manager Port in Use**—Port number that the lmadm uses to listen for communication. To configure the port number, use the Server Configuration tab.
- **Display**—On Windows-based systems, this is the system name or the terminal server client name (in a terminal server environment). On UNIX-based systems, this is the X-Display name or the value that is returned by the `ttynm()` (or comparable) function.
- **Host Name**—The host name of the system where the FlexNet Licensing Server is running (for example, **prod01**).
- **Host Domain Name**—The fully qualified host name of the system on the domain where the licensing server is running (for example, **prod01.flexerasoftware.com**).
- **IPv4 Address**—IP version 4 address that is used to identify the system (for example, **255.255.255.255**). The IPv4 address is shown when the system has IPv4 enabled.

- **IPv6 Address**—IP version 6 address that is used to identify the system (for example, **ffff:ffff:ffff:ffff:ffff:ffff:ffff:ffff**). The IPv6 address is shown when the system has IPv6 enabled.
- **Ethernet Address**—The machine's host ID (which is the MAC address of the machine and is also called the physical address) that identifies the system where the FlexNet Licensing Server software is running.
- **Volume Serial Number**—The hard disk serial number that identifies the system where the licensing server is running.
- **Local Stop Server Allowed**—Indicates whether you can stop the FlexNet Licensing Server using the lmdown utility running on the machine where the FlexNet Licensing Server is running (the local machine) or from the license server management interface. To configure this setting, use the `-allowStopServer` command-line parameter when you run the lmadmin.
- **Remote Stop Server Allowed**—Indicates whether you can stop the FlexNet Licensing Server.

If No is selected, you cannot stop the FlexNet Licensing Server from a remote machine using lmdown or the license server management interface.

If Yes is selected, you can stop the FlexNet Licensing Server using either of the following methods:

- Use lmdown from a remote machine—that is, a machine other than the one on which lmadmin is running.
- Click the Stop Server button on a license server management interface that is running on a remote machine.