

# Columbus 7.6.3

## Release Notes

Product version 7.6

# columbus

Issue: 12.19

© brainwaregroup - 1997-2019 - All rights reserved.

Every documentation provided by the brainwaregroup is subject to copyright and owned by the brainwaregroup. The brainwaregroup does not guarantee nor accepts the legal responsibility or any liability whatsoever for the usage of this information, for their economic feasibility or error-free function for a certain purpose.

In the compilation of this document, every effort been undertaken to ensure the correctness of the content. However, the brainwaregroup does not offer any guarantee related to this documentation nor does it offer a legal warranty for the marketable quality and suitability for a certain purpose. Furthermore, the brainwaregroup cannot held liable for errors, unintended damages, or consequential damages in relation with the provision, performance or usage of this document or the examples contained therein. The brainwaregroup reserves its right to change this documentation anytime without prior notice.

All names, company names or companies used in this document are fictitious and do not refer, neither in name nor content, to actually existing names, organizations, legal persons or institutions nor shall they represent them. Any similarity to existing people, organizations, legal persons or institutions is merely coincidental.

The software described in this document provided under the terms of a license contract and should use exclusively in accordance with the terms of this agreement.

<b>Document title</b>	Columbus 7.6.3 - Release Notes
<b>Product version</b>	7.6
<b>Production and printing</b>	Brainware Consulting & Development AG Dammstrasse 19 CH-6300 Zug
<b>Release date</b>	12.2019

Neither the whole document nor parts of it may copied, photocopied, reproduced or processed without prior written approval of the brainwaregroup.

<b>0</b>	<b>Columbus 7.6.0 – Global Note</b>	<b>4</b>
0.1	Content .....	4
0.2	Changed DB-engine .....	4
0.3	Changed license service .....	4
0.4	Exchange license file .....	4
0.5	Supported Columbus Versions .....	5
0.6	PatchDeploy replaced by UpdateManagement.....	5
0.7	Discontinued .....	6
0.8	Fixed .....	7
0.9	Depreciated .....	9
0.10	Improved.....	10
0.11	New functions / features.....	11
0.12	Known issues .....	13
<b>1</b>	<b>Columbus 7.6.0 – R1</b>	<b>13</b>
<b>2</b>	<b>Columbus 7.6.1</b>	<b>14</b>
<b>3</b>	<b>Columbus 7.6.2</b>	<b>17</b>
<b>4</b>	<b>Columbus 7.6.3</b>	<b>19</b>
<b>5</b>	<b>Prerequisites</b>	<b>24</b>
5.1	Master Server .....	24
5.1.1	Setup issue “Error opening file for writing:” .....	24
5.2	Site Server .....	25
5.2.1	Setup issue “Could not determine Installation Type” .....	25
5.2.2	Setup issue “Error opening file for writing:” .....	25
<b>6</b>	<b>Knowledgebase Articles</b>	<b>26</b>

# Columbus 7.6.0 – Global Note

---

## 0.1 Content

---

This document contains the product changes for version 7.6.0. For more information of improvements from older versions, please check release notes for each older version (E.g. 7.5.5, 7.4.0, 7.3.0).

## 0.2 Changed DB-engine

---

Columbus 7.6 (Since version 7.5.0) will no longer support Firebird SQL and will now support Microsoft SQL Server only. See chapter 1 - Prerequisites for more information.

## 0.3 Changed license service

---

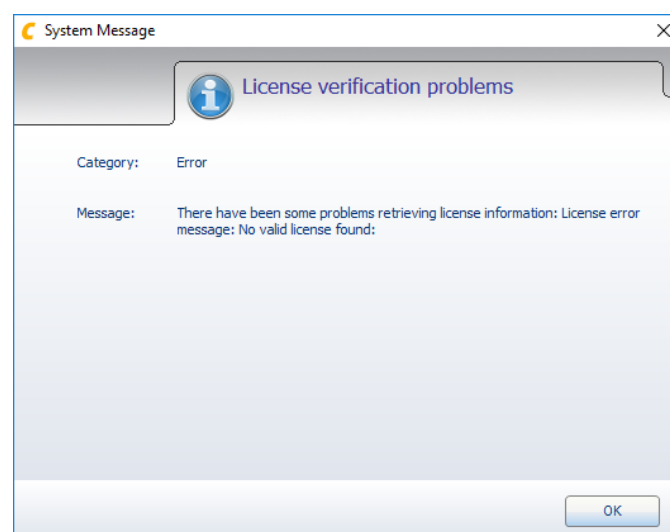
The license server was previously written with Microsoft .net2 framework and installed to: C:\inetpub\wwwroot\LicenseService.

The new license server is written with Microsoft .net4 framework and installed to: %\_ProgramFiles%\Columbus\LicenseService

<b>Note</b>	A license activation is required after migration from version prior to 7.5.0; please follow the instructions from the LicenseConsole.exe
-------------	--

## 0.4 Exchange license file

---



If you get this error, please exchange license file prior to the setup process with License Console.

## 0.5 Supported Columbus Versions

---

The Columbus 7.6.0 setup supports the automated migration from Columbus 7.3 or higher.

Older Columbus installations must have updated to the latest 7.4.1 version before updating to 7.6.0.

## 0.6 PatchDeploy replaced by UpdateManagement

---

As a sequel to Patch Deploy, Update Management was released in May 2017. The previous services (catalog and patches) for PatchDeployment will be discontinued as of December 31, 2018.

## 0.7 Discontinued

---

### Infrastructure

Discontinued: Allow alternate server connection for Blockstore agent

The configuration does not more allow to define alternate Blockstore hosts as this concurrent current Client Templates.

### Management Console

Discontinued: Local impersonation credentials for OS Deployment agent

Only the net access credentials are needed.

## 0.8 Fixed

---

### Management Console

Fixed: Various problem with filtering

Various problems during filtering for list content fixed.

Fixed: Various problem with tool tips

Various problems with tool tips for list content fixed.

Fixed: Various export did not work

Various problems with export for list content fixed.

Fixed: Delete for additional SWDepots not successfully

Some registry keys exist after removing additional SWDepots.

Fixed: SmartSelection “not contains” did not work

Queries with “not contains” are working now.

### Management Client

Fixed: Command IF GROUP does not resolve nested groups

The command IF GROUP works as expected now.

Fixed: The “hide” button was disabled during action processing

The Client can have switched to hide mode now.

Fixed: Access violation when viewing Backup Set

An access violation dialog was present when viewing Backup Sets.

Fixed: Access violation when stopping Client

An access violation dialog was present when stopping Client.

Fixed: OTB connection may not closed.

In some circumstances an OTB connection gets not closed.

## UpdateManagement

Fixed: Log overflow by UpdateManagement

Only output relevant log information.

Fixed: Force a scan even a daily scan has begun

The administrator can overcontrol a daily scheduled scan.

Fixed: Uninstall for updates did not work

In some circumstances the uninstall for updates did not work.

## OS-Deployment

Fixed: Wrong WinPE assignment for Hyper-V

The WinPE architecture was wrong for requests for Hyper-V Clients.

Fixed: Same name for sources could struggle process

Same names are handled correctly now.

Fixed: Problem while identify HP Elite x2 1012 G2 during WinPE

The UUID could not read correctly.

## Packaging

Fixed: Package Maker creates bluescreen on Windows 10 1803

The reason for bluescreening is fixed.

## Inventory

Fixed: Connection state for Monitor differentiated between agent or scanner reporting

The Agent and Scanner did report different results.



## 0.9 Depreciated

---

### PatchDeploy

“UpdateManagement” replaces the known feature “Columbus PatchDeploy”.

For existing customer Columbus 7.5.0 preserves existing PatchDeploy data and behaviour. We recommend new UpdateManagement to protect your IT-systems. To disable your PatchDeploy behaviour, please request a new license file from [orders@flexera.com](mailto:orders@flexera.com) without the feature LFT\_ColumbusPatchDeploy.

Your subscription for PatchDeploy automatically updated to UpdateManagement.

The PatchDeploy services get deactivated latest on December 31th 2018 (Or earlier).

For new Customers “Columbus PatchDeploy” is not available at all.

### PatchDeploy replaced by UpdateManagement

As a sequel to Patch Deploy, Update Management was released in May 2017. The previous services (catalog and patches) for PatchDeployment will be discontinued as of December 31, 2018.

The Patch Deploy module will be removed from Columbus soon.

### COM Interface

The known feature “SOAP interface” replaced by “REST”.

SOAP used by actions triggered by Spider OperationManager (SW ordering, inventory data for incident tickets and ASAP commands)

The COM Interface will be removed soon.

## 0.10 Improved

---

### Infrastructure

Improvement: Cleanup data when removing user/device

The cleanup is faster now.

Improvement: Less log file spam

Many log entries moved to higher log levels to prevent user with spammed log files.

## 0.11 New functions / features

### Management Console

New: Replaced device & user grid

New grid offers more details and state information for lists. Filter, sort and navigation highly improved.

New: Store log files from WinPE in DB and offer to watch in Console

Note: The creation for Debug logs must be enabled in configuration for OS-Deployment agent.

### REST

New: Support filters for "treeNodes" and "companies"

**List all Sites for a specific Company (Or Site)**

1/treeNodes?filter=parentId:I7J8pBO1lR

**Get information for a specific Site by Name**

1/treeNodes?filter=title:"My Site"

**Get informaton for a specific Company by Name**

1/companies?filter=name:"Brainwaregroup"

New: Get device inventory for software

?include=softwareInventory

New: Get available SmartDeploy templates

GET /companies/{id}/operatingSystemTemplates

## UpdateManagement

New: Support for servicing stack updates (SSU)

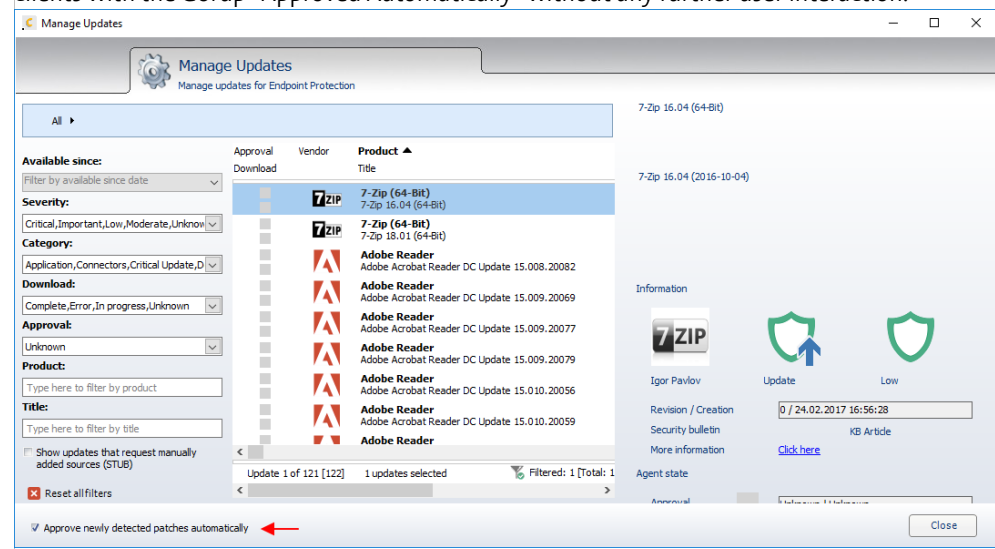
UpdateManagement can support SSU files.

New: Simplify the selection from device list to select update in Endpoint agent

Select needed updates, select form context menu “Save selection to clipboard”. In the list for downloaded items, select from context menu: select from clipboard.

New: Automatic approval

Newly detected patches may now be automatically approved. Set a repeated Patch download to gain the advantage of this feature. Those patches will be deployed autonomously to all clients with the Gorup “Approved Automatically” without any further user interaction.



## 0.12 Known issues

### UpdateManagement

Open: Audit events for UpdateManagement

The current release does not support the audit UpdateManagement events.

Known: No support to remove updates from Windows prior NT6.1

Windows XP, 2003, Vista and Server 2008 not supported to remove installed updates.

### Documentation

Open: The topic for “SW-Management from Cloud”

The documentation will be delivered soon (Included in OS- or SW-Deployment manuals).

### CMC - Languages

Open: Partial Japanese translations missing

The Japanese language only translated partially and will not more delivered or supported.

# 1 Columbus 7.6.0 – R1

### Fixed

CMC - “Show package assignments” did not work correctly

The report has been fixed

CMC - Sorting of software status

In some circumstances an OTB connection gets not closed.

CMC - Config template: Alternate shareless settings restored

Inventory Common Inventory Spider Power Management Shareless

Shareless options

Template settings

☐ Not configured

☐ Default

☒ Configure

General

Get data blocks from:

☒ Columbus BlockStore

☐ Content Delivery Network (CDN)

Columbus BlockStore:

☒ Set alternate server if current is not

☐ Override OU assigned

Alt1

Alt2

Port 20006

## 2 Columbus 7.6.1

---

This release contains mainly bugfixes and optimizations. A lot of work has been done to give the user a better experience. The most notable are listed in this section.

### Console

#### Filtering with special characters

This issue has been fixed.

#### Refresh after changed device activation state

A refresh for the device has been added.

#### The searches "Assigned to OU" and "Not Assigned to OU" may not work correctly

This issue has been fixed.

#### Software sorting on software package patch list

The default Sort order has been changed to order after patch number.

#### Smart selections not updated on other instances

Smart selections will now get updated on other CMC instances.

#### Devices hidden in list

After some actions, devices may get hidden in the device list. List gets now refreshed correctly.

#### Groups assignments to user didn't work

This issue has been fixed.

#### User Software grid updated

The user's software list looks now the same as the one from the devices.

#### Sorting of devices list

Various optimisations.

#### Unicode Packages in software list

Packages with Unicode characters in title were displayed as "???".

## Update management settings in config template

Explanations have been added.

## Unresponsive console

Console may get sometimes unresponsive due to processing notifications. This issue has been fixed.





## Assignments of empty software group are not visible

This issue has been fixed.

## “Show package assignments” performance

The database queries have been optimised.

## Software version of package was missing in the infrastructure agent view

Scripted Packages Security Patches Deployment Groups							
Activation	Description Identifier	status	Version	CRC	Deploy	Status Platform	Lang
	999000_ColumbusStatus 999000_COLUMBUSSTATUS	01				Ready for QA EASY	ENU
	999000_ColumbusStatus 999000_COLUMBUSSTATUS	02				Ready for QA EASY	ENU

## UpdateManagement forensic report

Various optimisations.

## Run as a different user

The console may not have been run as a different user (e.g. runas.exe cmd.exe ...). This issue has been fixed

## Management Client

## “Missing blocks” in shareless mode

This error was raised due to insufficient free space on the target. The device will now report back which packages couldn't be installed.

## High CPU usage

On some specific hardware, the scanner may have caused a high CPU usage during the inventory scan. This issue has been fixed.

## Infrastructure Service

### OTB performance

The infrastructure is now able to handle 15% more connections.

## PXE

### Wrong version of DOSUNDI shown in legacy mode

This issue has been fixed.

## OS-Deployment

### WinPE reboots immediately after loading

This issue has been fixed.

**NOTE:** If this issue persists, set an “Inject Windows PE files” action on the preboot agent to update the necessary files.



# Columbus 7.6.2

## New

### Columbus Infrastructure on a Synology NAS

Blockstore and PXE can now be used from a NAS.

Devices	Users	Site Management	Infrastructure
colds			
diskstation			

Company	Agent	Last contact	Last status
✓roba19	Block Store	31.07.2019 12:57:	31.07.2019 12:57:45: Server running, block depot size is currently 0 MB
✓roba19	Preboot Services	31.07.2019 10:12:	31.07.2019 10:12:59: Started Preboot services.

**Columbus Infrastructure**

**Status**

Preboot:

Blockstore:

**REST Connection**

Enter the address and credentials for the Columbus REST service

Server:

User:

Password:

The Synology package and documentation can be found in the download area of the Flexera community <https://community.flexera.com>

## Fixes

### Blockstore

Processing large packages (25GB+) may have timed out on a slow system

This issue has been fixed.

### CMC

Wrong hints in Software list

This issue has been fixed.

Incorrect Software Status

Some packages were marked for uninstallation even if they were never installed.

**Selected package gets changed on device change**

This issue has been fixed

**Selected Agent gets reselected**

Changing between servers in infrastructure view will now reselect the previously selected agent.

**Package re-install not shown correctly**

This issue has been fixed.

**SWDeploy****New installations may have had errors during SWDepot refresh due to missing configuration**

This issue has been fixed.

## Columbus 7.6.3

In this release we have fixed, improved and added new features. The following list shows an overview about the most noteworthy.

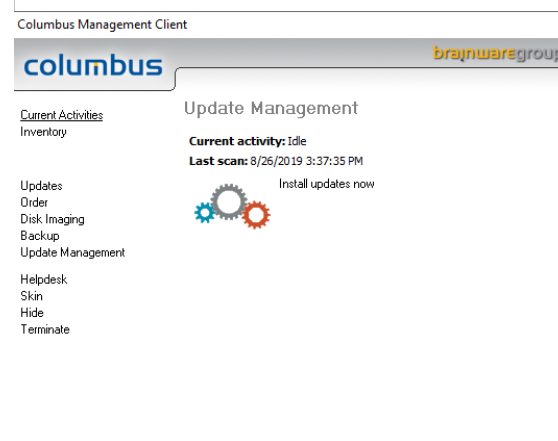
### Management Client

#### Missing Client translations

Some client translations were missing for the imaging. Those have been added

#### Update Management status shown in client

The update status of a machine is now shown in the client's GUI. You may enable the menu entry in the client's configuration template.



#### Management Client uninstaller

The uninstall function of the client can only be used from the Management Console. An appropriate message has been added.

### Management Console

#### Empty hints

Under circumstances the console may have displayed empty hints on buttons or other elements. This issue has been fixed.

#### Wrong date format in dashboard

If a client has a different time format (eg. YYYYDDMM) will be shown correctly. This issue has been fixed.

**Preboot Agent – Shortcuts**

Some Shortcuts were overriding default action. This has been optimised

**Show package assignments – Wrong results if AND query is used**

This issue has been fixed

## OS Deploy

**Updated Windows PE**

The boot images have been updated to version 1903.  
There won't be an official 1909, but the images have been updated for latest hardware compatibility. Please check your drivers needed accordingly.

## Remotely Anywhere

**New Version**

Updated to 12.4.4693

## REST

**Improvements and harmonization**

The REST interface has been improved for simplification and “completeness”. It does not provide full functionality like the console but it's a step further.

For full details, read the REST documentation.

## Setup

**Files were not removed**

Some files may have been left after an uninstall. This issue has been fixed

**Prerequisites Links updated**

The pre-installation checks had wrong links due to changes of the Flexera community. The links have no been updated.

## Update Management

**Invalid WSUSSCN2.cab signature**

Some customers experienced the problem of an invalid update catalogue (client log):

EndpointProtection: [EXCEPTION] - VerifyMicrosoftCatalogueFile: WUA API  
AddScanPackageService fails: [E01eException] The digital signature of the object did not verify

The Infrastructure server will now verify the integrity of the file before any further processing.  
**As prerequisite on the master server (where the patches are downloaded), this functionality requires the local Windows Update service to be active!**

### Improved Reboot options

It's now possible to set the behaviour for installation and reboot apart.

New installations may have had errors during SWDepot refresh due to missing configuration

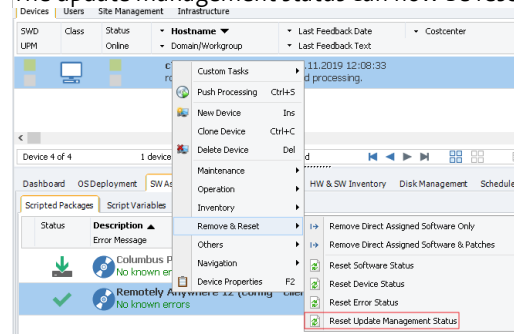
This issue has been fixed.

### Improvements on initial Patch download

Improved Metadata generation for the 3<sup>rd</sup> party and MS catalogue.

### Reset Update management Status

The update management status can now be reset.



### Automatically set stub patch as approved

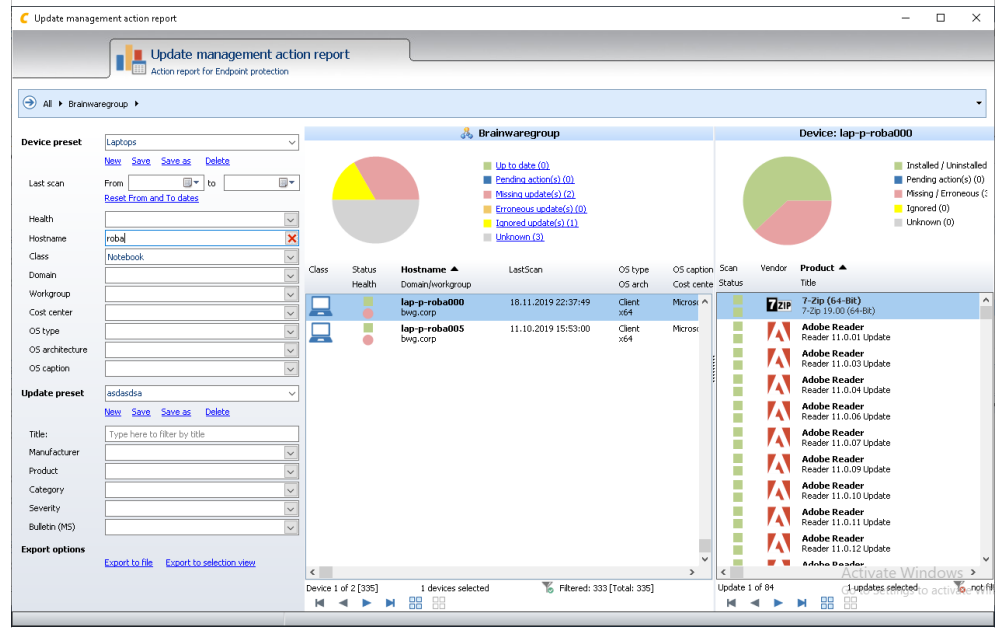
When the source of a stub patch gets added, the patch will automatically be set as approved

### Wrong update selected for stub patches

When loading a stub patch, a wrong filter may have been set. This issue has been fixed.

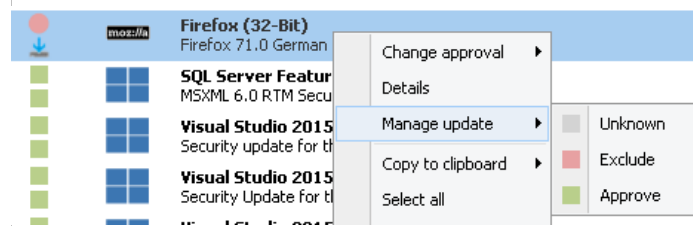
## New Report

A new report has been added for simplification. Additionally, it has also preset which allows to save the most common searches for an easier use.



## Update approval from device list

Updates can now be directly approved from the device list.



## Install / missing count

The “Manage Updates” dialog shows now how many times an update is installed or missing.

Approval	Vendor	Product	Category	Severity	Available since	Installed
Download		Title ▲			Last approval change	Missing
		Adobe Acrobat			22.11.2017 09:09:51	2
		Acrobat 11.0.23 Update			Unknown	0
		Adobe Reader			21.11.2017 06:46:17	50
		Reader 11.0.23 Update			Unknown	10

## Expired / superseded coloring

Expired and superseded updates are now shown in a different color:

- Expired red
- Superseded dark red

	<b>Adobe Reader</b> Reader Multi Lingual User Interface 11.0.19 Update
	<b>Flash Player</b> Flash Player 32.0.0.114 (Firefox and Netscape - NPAPI)
	<b>Garmin Express</b> Garmin Express 6.11.1.0
	<b>Java Runtime Environment (32-Bit)</b> Java Runtime Environment 1.8.111 (32-Bit)
	<b>Java Runtime Environment (64-Bit)</b> Java Runtime Environment 1.8.111 (64-Bit)
	<b>Microsoft SQL Server 2012</b> Security Update for SQL Server 2012 Service Pack 3 GDR (KB4057115)

## PXE

### Signed UEFI files – final release

The files have now been signed and secure boot should not be an issue anymore.

## Tools

### CollectBWSupportFiles

Various improvements.

### AdminConsole – Start as administrator

On Systems with UAC enabled, the registry entries got written into the VirtualStore of the user. The AdminConsole will now be started as administrator to accomplish the right settings.

# Prerequisites

---

## 5.1 Master Server

---

### Columbus Infrastructure

- Server 2008 SP2 (32/64bit)
- Server 2016 (recommended)
- 5GB free Space for application files
- 10 GB free Space for Repository (Dependent customers OS- and SW-release data)
- 4GB RAM
- Physical or virtualized
- SQL native Client 2012 (To process Columbus installation)

### License (Server and Console)

- Microsoft .net Framework 4.6
- Windows IIS

### Database

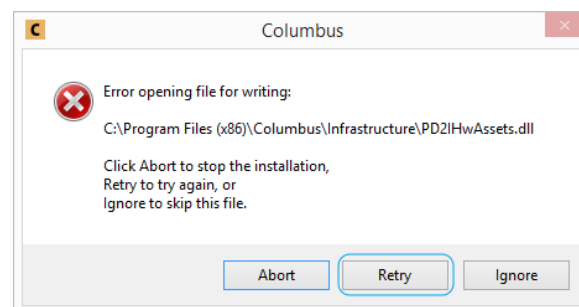
Local installation or remote access:

- MS SQL Server 2014, 2016 (Servicepack 1 mandatory), 2017 (Express, Standard, Enterprise)
- Windows or SQL-User Authentication

### 5.1.1 Setup issue “Error opening file for writing:”

---

In some circumstances (Depend from running modules), Columbus 7.5.x setup cannot overwrite some files:



Workaround:

Click on “Retry”. The same or similar message can appear multiple times.



## 5.2 Site Server

---

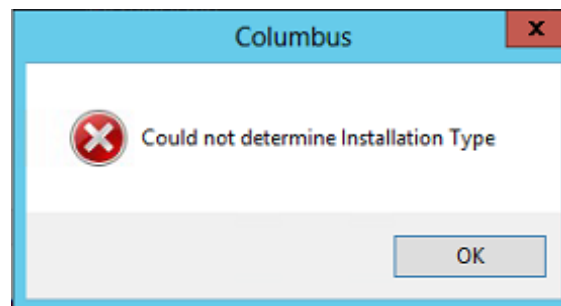
### Columbus Infrastructure

- Server 2008 SP2 (32/64bit)
- Server 2016 (recommended)
- 5 GB free Space for Program Files
- 10 GB free Space for Repository (Dependent customers OS- and SW-release data)
- 4 GB RAM
- Physical or virtualized

### 5.2.1 Setup issue “Could not determine Installation Type”

---

Columbus 7.5.x setup requires some information from registry, not provided by 7.4.x setup script:



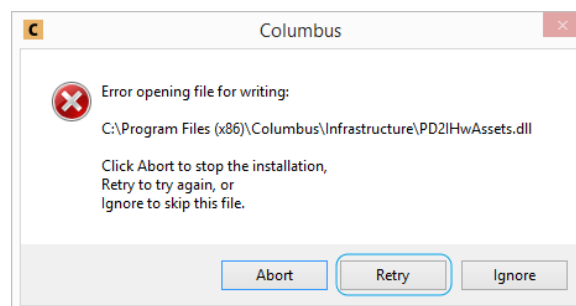
Workaround:

```
[HKEY_LOCAL_MACHINE\SOFTWARE\Wow6432Node\Brainware\Columbus\7\Setup]  
"IsSite"=dword:00000001
```

### 5.2.2 Setup issue “Error opening file for writing:”

---

In some circumstances (Depend from running modules), Columbus 7.5.x setup cannot overwrite some files:



Workaround:

Click on “Retry”. The same or similar message can appear multiple times.

# Knowledgebase Articles

---

## Setup

Prerequisites Columbus 7.5 or newer

<https://community.flexera.com/t5/Columbus-knowledge-base/Prerequisites-Columbus-7-5/ta-p/460>

System Requirements - SQL Server

<https://community.flexera.com/t5/Columbus-knowledge-base/System-Requirements-SQL-Server/ta-p/478>

## Communication

Columbus 7.5 or newer Client and Server Communication (Ports)

<https://community.flexera.com/t5/Columbus-knowledge-base/Columbus-7-5-Client-and-Server-Communication-Ports/ta-p/5227>